

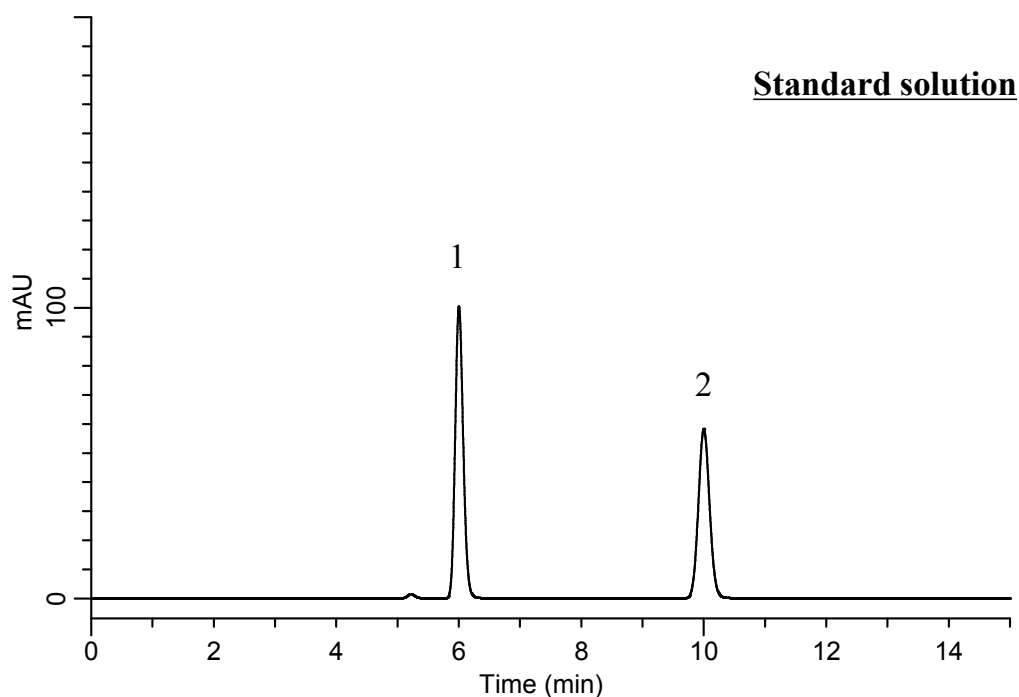
# InertSearch™ for LC

Inertsil® Applications

## Analysis of Hydrochlorothiazide

(Under the Condition of the Japanese Pharmacopoeia,  
Candesartan cilexetil and Hydrochlorothiazide Tablets)

Data No. LB306-0894



### Conditions

**System** : GL7700 HPLC system  
**Column** : Inertsil ODS-4  
(4  $\mu$  m, 150 x 4.6 mm I.D.)  
**Column Cat. No.** : 5020-89608  
**Eluent** : A) CH<sub>3</sub>CN  
B) Buffer\*  
A/B = 1/3, v/v  
**Flow Rate** : 0.71 mL/min  
**Col. Temp.** : 25 °C  
**Detection** : UV 254 nm (UV7750 UV Detector)  
**Injection Vol.** : 10  $\mu$  L  
**Sample** : Standard

### Analyte:

1. Hydrochlorothiazide 62 mg/L  
2. *m*-Hydroxyacetophenone 15.4 mg/L

Resolution (1, 2) : 13.9 ( $\geq$  5)

\*Dissolve 7.80 g of sodium dihydrogenphosphate dihydrate in 900 mL of water.  
Adjust pH 5.5 by sodium hydroxide.  
Add water to make 1,000 mL.