

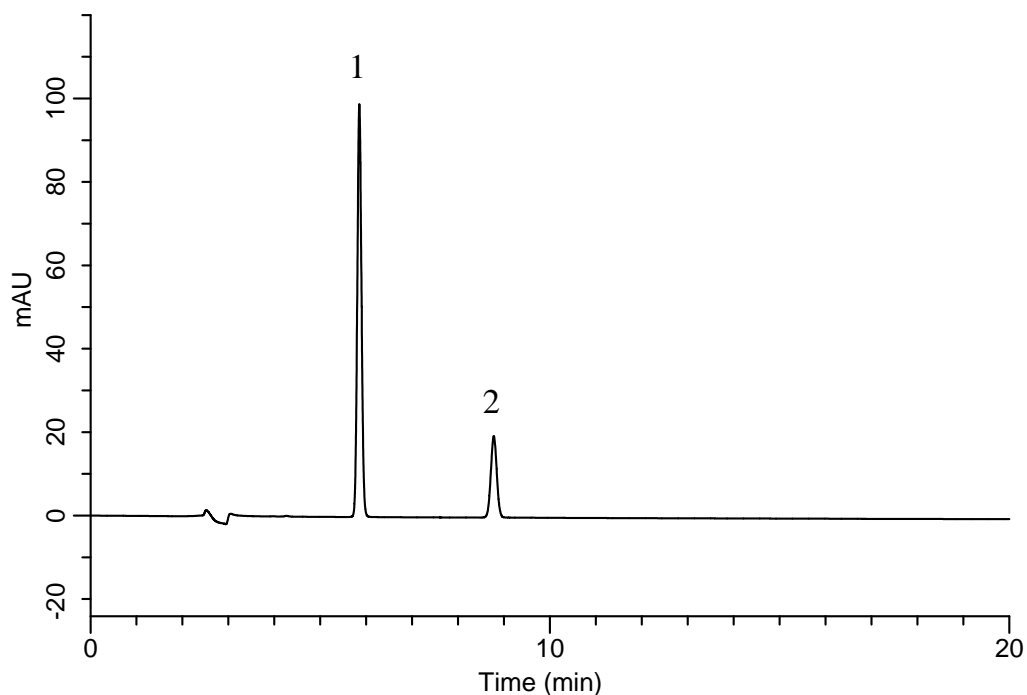
# InertSearch™ for LC

Inertsil® Applications

## Analysis of Acesulfame potassium

(Under the Condition of the JSFA-VIII (Japanese Standards of Food Additives))

Data No. LB314-0894



### Conditions

**System** : GL7700 HPLC system  
**Column** : InertSustain C18  
(5  $\mu$  m, 250 x 4.6 mm I.D.)  
**Column Cat. No.** : 5020-07346  
**Eluent** : A) CH<sub>3</sub>CN  
B) 10 mM Tetrabutylammonium hydrogensulfate  
A/B = 2/3, v/v  
**Flow Rate** : 1.0 mL/min  
**Col. Temp.** : 40 °C  
**Detection** : UV 227 nm (UV7750 UV Detector)  
**Injection Vol.** : 20  $\mu$  L  
**Sample** : Standard

### Analyte:

1. Acesulfame potassium 10 mg/L  
2. *p*-Hydroxybenzoic acid ethyl ester 10 mg/L

Resolution (1, 2) : 14.5