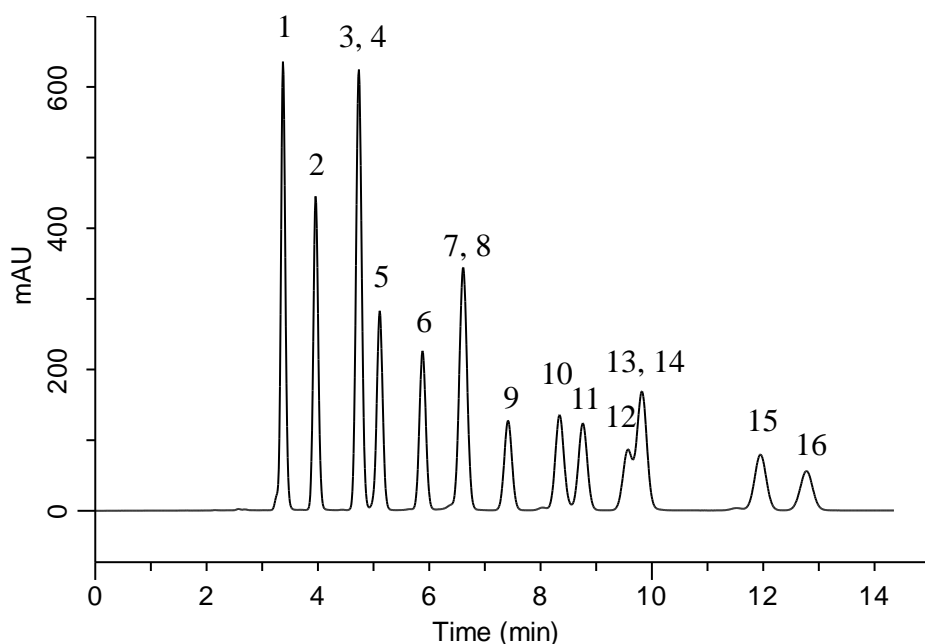


Analysis of 16 kinds of Aldehydes (Directed by Pre-Column Method with DNPH)



Conditions

System : GL7700 HPLC system
Column : InertSustainSwift C18
 (5 μ m, 150 x 4.6 mm I.D.)
Column Cat. No. : 5020-88026
Eluent : A) CH₃CN
 B) H₂O
 A/B = 60/40, v/v
Flow Rate : 1.0 mL/min
Col. Temp. : 40 °C
Detection : UV 360 nm (PD7752 PDA Detector)
Injection Vol. : 10 μ L
Sample : Standard

Analyte:

1. DNPH-Formaldehyde
2. DNPH-Acetaldehyde
3. DNPH-Acetone
4. DNPH-Acrolein
5. DNPH-Propionaldehyde
6. DNPH-Crotonaldehyde
7. DNPH-Isobutyraldehyde
8. DNPH-*n*-Butyraldehyde
9. DNPH-Benzaldehyde
10. DNPH-Isovaleraldehyde
11. DNPH-*n*-Valeraldehyde
12. DNPH-*o*-Tolualdehyde
13. DNPH-*m*-Tolualdehyde
14. DNPH-*p*-Tolualdehyde
15. DNPH-*n*-Hexanal
16. DNPH-2,5-Dimethylbenzaldehyde
(10 μ g/mL in CH₃CN each)