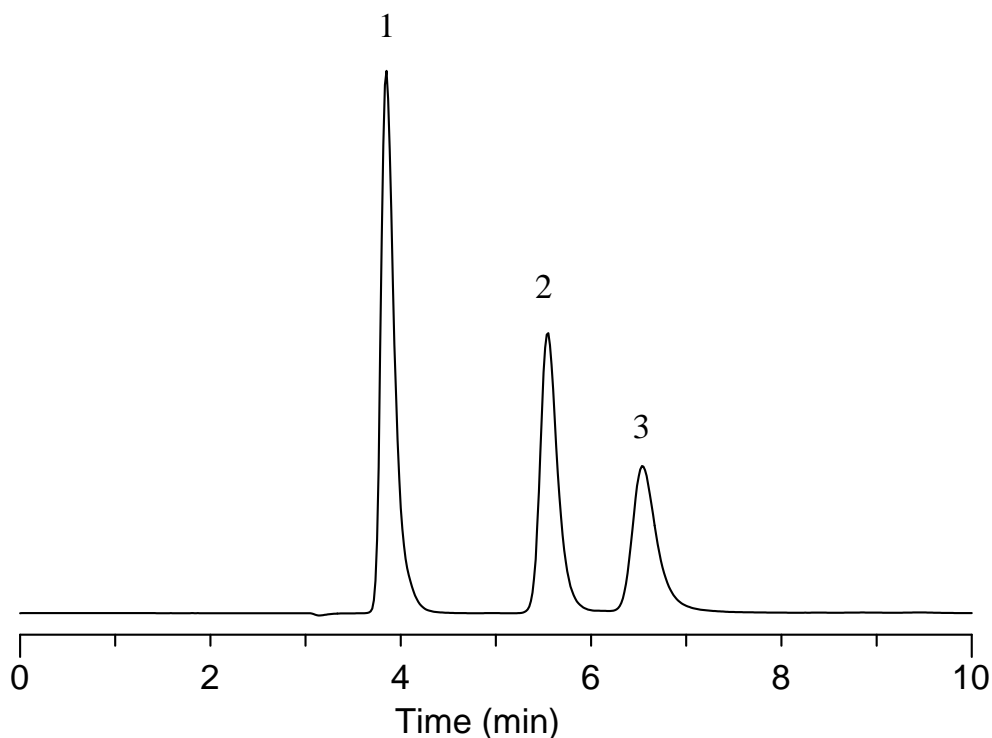


# InertSearch™ for LC

Inertsil® Applications

## Analysis of Inositol, Ribitol and Fucose

Data No. LB346-0919



### Conditions

**System** : GL7700 HPLC system  
**Column** : InertSphere Sugar-1  
(5  $\mu$  m, 150 x 4.6 mm I.D.)  
**Column Cat. No.** : 5020-11001  
**Eluent** : 200 mM NaOH in H<sub>2</sub>O  
**Flow Rate** : 0.5 mL/min  
**Col. Temp.** : 30 °C  
**Detection** : ECD Pulse Mode (ED723, Gold)

### Analyte:

1. Inositol	10 mg/L
2. Ribitol	10 mg/L
3. Fucose	10 mg/L

E1:	150 mV	t1:	600 ms
E2:	-1500 mV	t2:	50 ms
E3:	600 mV	t3:	50 ms
E4:	-200 mV	t4:	100 ms
		ts:	50 ms

**Injection Vol.** : 10  $\mu$  L  
**Sample** : Standard