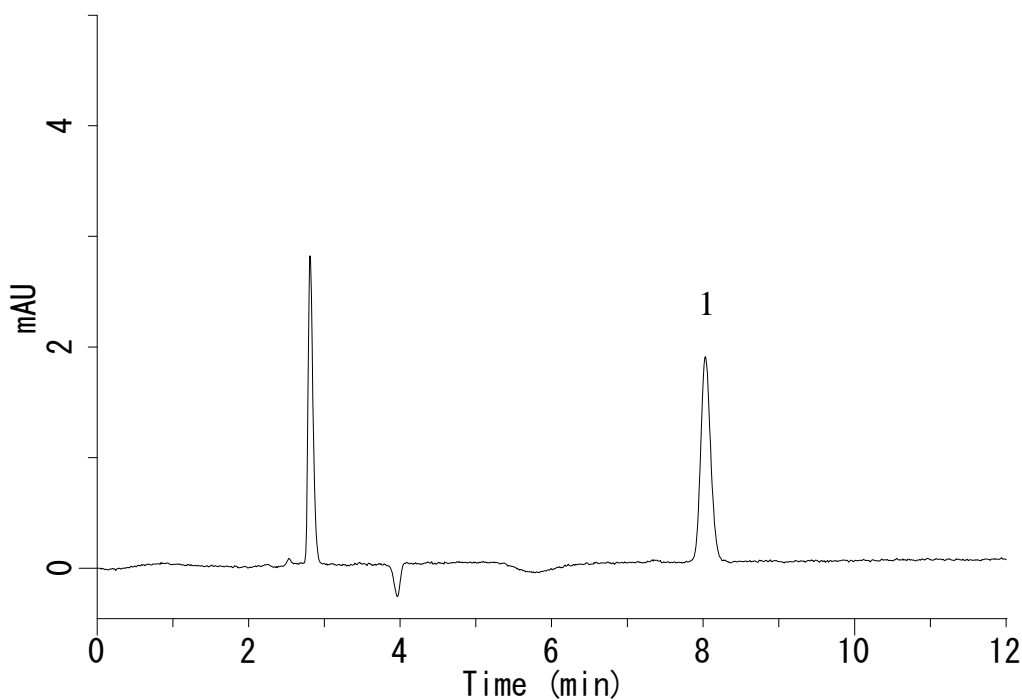


# InertSearch™ for LC

Inertsil® Applications

## Analysis of Sodium Propionate

Data No. LB349-0785



### Conditions

**System** : GL7700 HPLC system  
**Column** : InertSustain C18  
(5  $\mu$  m, 250 x 4.6 mm I.D.)  
**Column Cat. No.** : 5020-07346  
**Eluent** : Solution\*  
**Flow Rate** : 1.0 mL/min  
**Col. Temp.** : 40 °C  
**Detection** : UV 210 nm (PD7752 PDA Detector)  
**Injection Vol.** : 10  $\mu$  L  
**Sample** : Standard

\*Mix 60mL of CH<sub>3</sub>CN and 940 mL of H<sub>2</sub>O.  
Adjust pH 2.5 by H<sub>3</sub>PO<sub>4</sub>.

### **Analyte:**

1. Sodium Propionate                      50  $\mu$  g/mL