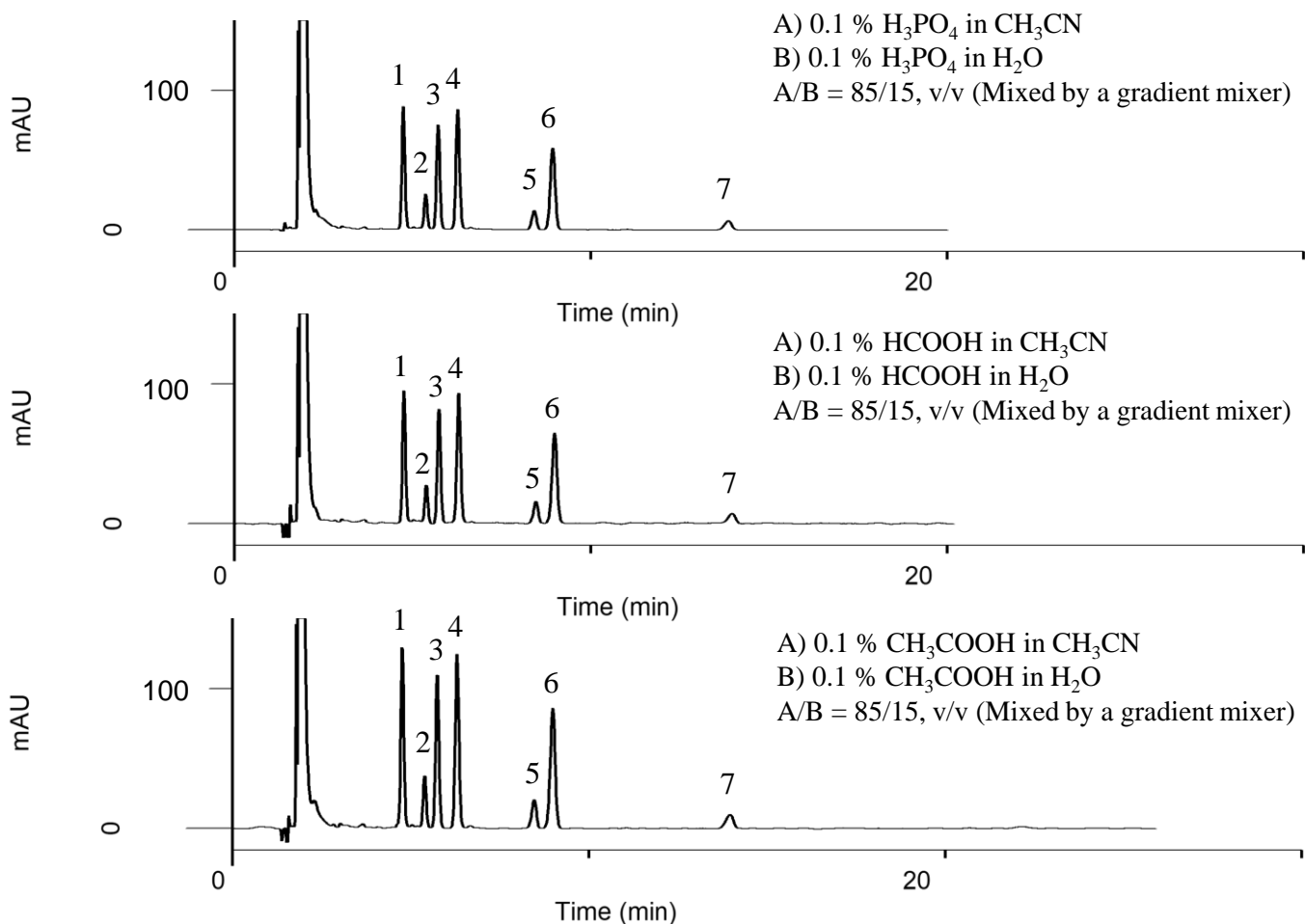


Analysis of 7 fatty acids



Conditions

System : GL7700 HPLC system
Column : InertSustain C18
 (3 μm, 150 x 4.6 mm I.D.)
Column Cat. No. : 5020-07445
Eluent : Mentioned in each chromatogram
Flow Rate : 1.0 mL/min
Col. Temp. : 40 °C
Detection : UV 210 nm (PD7752 PDA Detector)
Injection Vol. : 5 μL
Sample : Standard

Analyte:

1. α-Linolenic acid (C18:3, M.W. 278.43)	0.048 mg/mL
2. Myristic acid (C14:0, M.W. 228.37)	2.381 mg/mL
3. Palmitoleic acid (C16:1, M.W. 254.41)	1.190 mg/mL
4. Linoleic acid (C18:2, M.W. 280.45)	0.048 mg/mL
5. Palmitic acid (C16:0, M.W. 256.42)	2.381 mg/mL
6. Oleic acid (C18:1, M.W. 282.46)	1.190 mg/mL
7. Stearic acid (C18:0, M.W. 284.48)	2.381 mg/mL

(dissolved in EtOAc each)