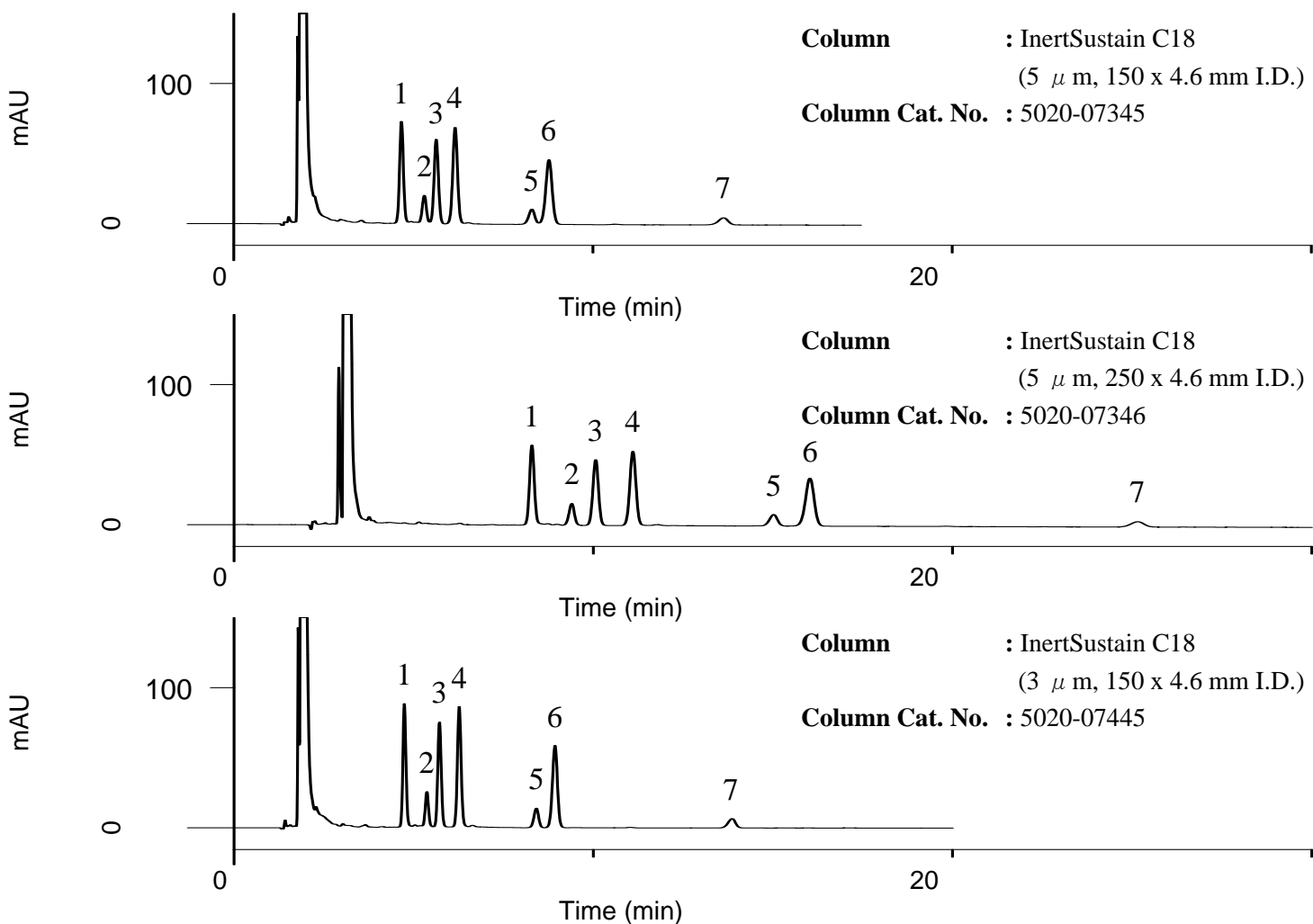


InertSearch™ for LC

Inertsil® Applications

Analysis of 7 fatty acids

Data No. LB355-0659



Conditions

System : GL7700 HPLC system
Column : Mentioned in each chromatogram
Column Cat. No. : Mentioned in each chromatogram
Eluent : A) 0.1 % CH₃COOH in CH₃CN
B) 0.1 % CH₃COOH in H₂O
A/B = 85/15, v/v (Mixed by a gradient mixer)
Flow Rate : 1.0 mL/min
Col. Temp. : 40 °C
Detection : UV 210 nm (PD7752 PDA Detector)
Injection Vol. : 5 µL
Sample : Standard

Analyte:

1. α -Linolenic acid (C18:3, M.W. 278.43)	0.048 mg/mL
2. Myristic acid (C14:0, M.W. 228.37)	2.381 mg/mL
3. Palmitoleic acid (C16:1, M.W. 254.41)	1.190 mg/mL
4. Linoleic acid (C18:2, M.W. 280.45)	0.048 mg/mL
5. Palmitic acid (C16:0, M.W. 256.42)	2.381 mg/mL
6. Oleic acid (C18:1, M.W. 282.46)	1.190 mg/mL
7. Stearic acid (C18:0, M.W. 284.48)	2.381 mg/mL

(dissolved in EtOAc each)