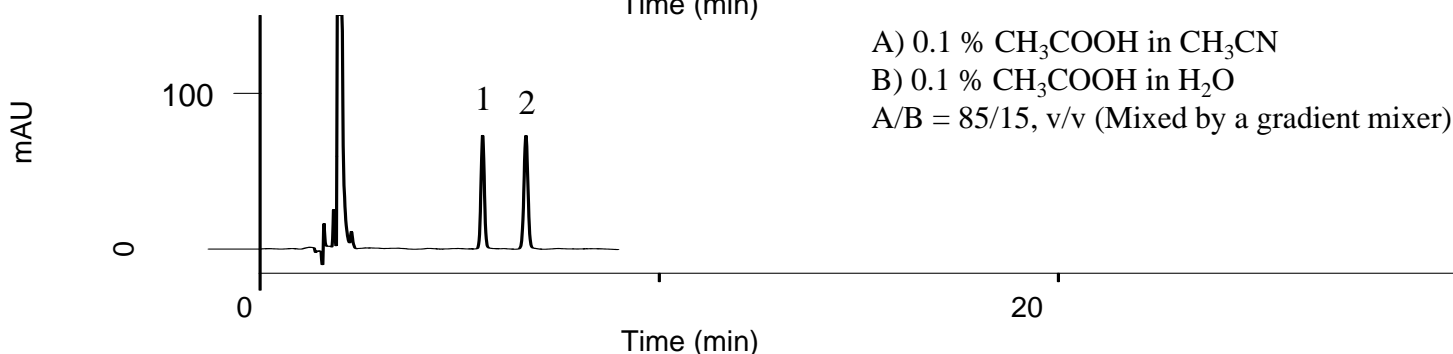
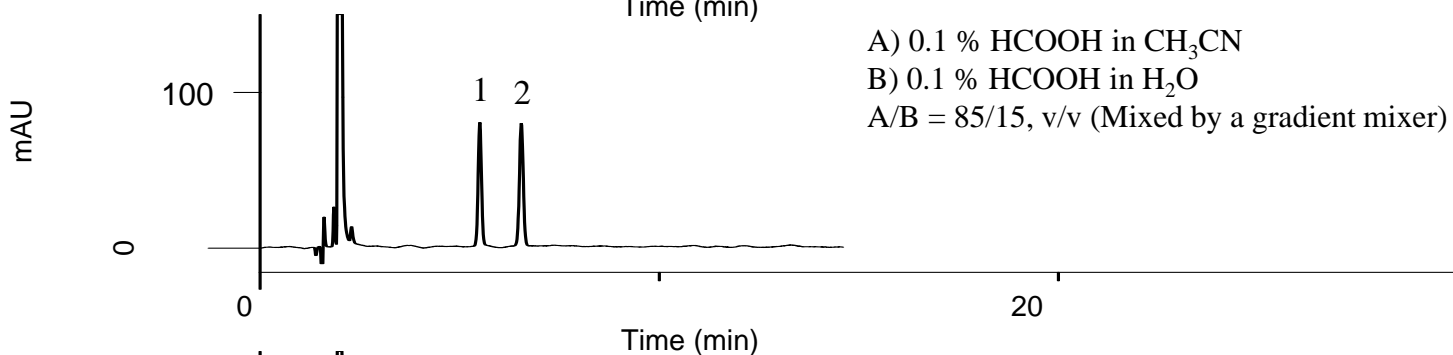
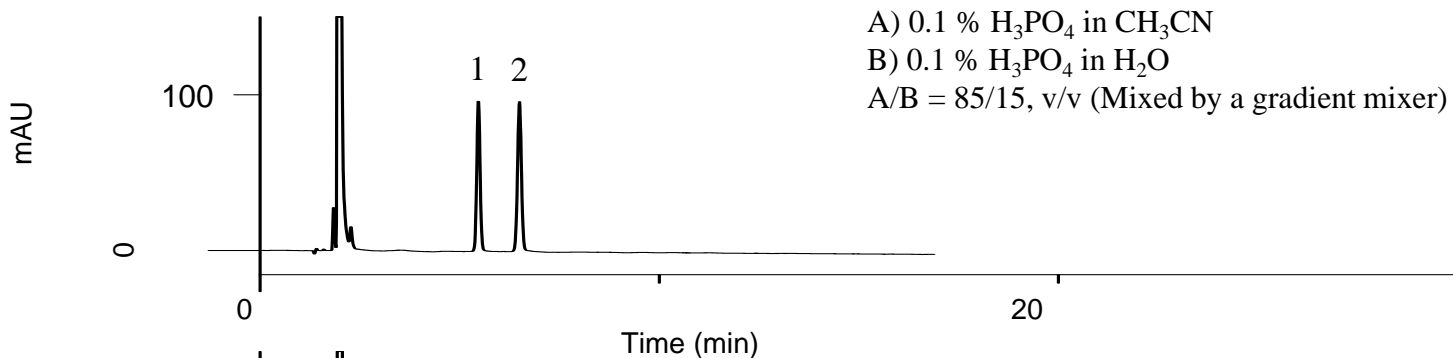


# InertSearch™ for LC

Inertsil® Applications

## Analysis of EPA and DHA

Data No. LB356-0659



### Conditions

**System** : GL7700 HPLC system  
**Column** : Inertsil ODS-3  
(3 μm, 150 x 4.6 mm I.D.)  
**Column Cat. No.** : 5020-01771  
**Eluent** : Mentioned in each chromatogram  
**Flow Rate** : 1.0 mL/min  
**Col. Temp.** : 40 °C  
**Detection** : UV 210 nm (PD7752 PDA Detector)  
**Injection Vol.** : 1 μL  
**Sample** : Standard

### Analyte:

1. EPA, *cis*-5,8,11,14,17-Eicosapentaenoic acid  
(C20:5, M.W. 302.45) 0.125 mg/mL
2. DHA, *cis*-4,7,10,13,16,19-Docosahexaenoic acid  
(C22:6, M.W. 328.49) 0.125 mg/mL  
(dissolved in EtOAc each)