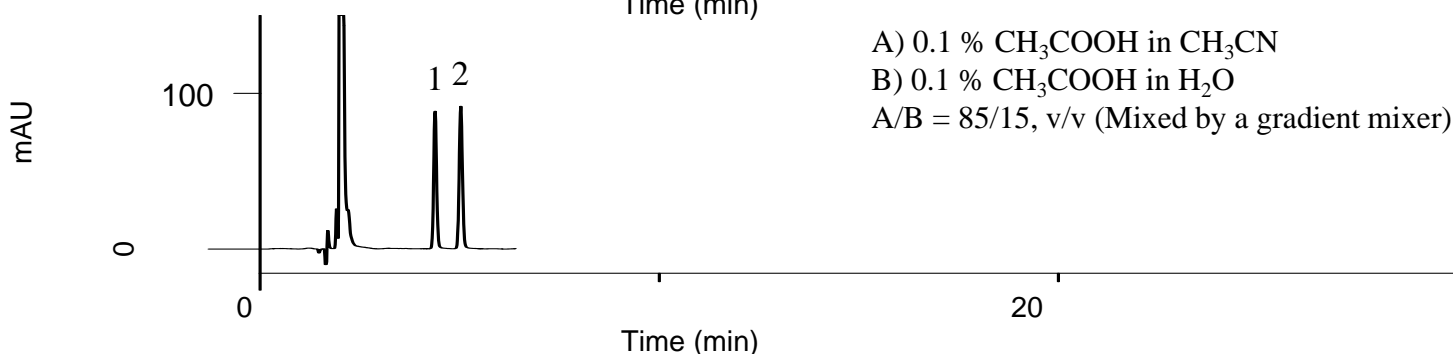
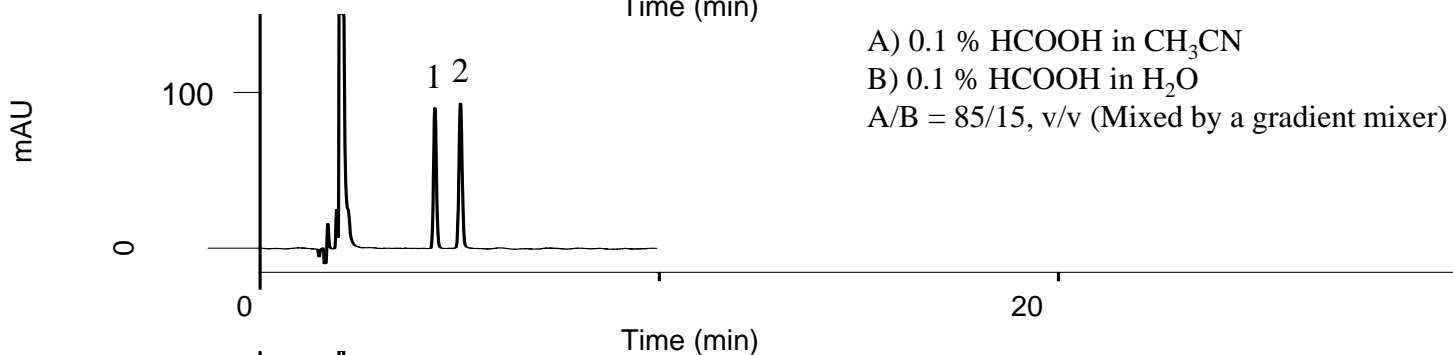
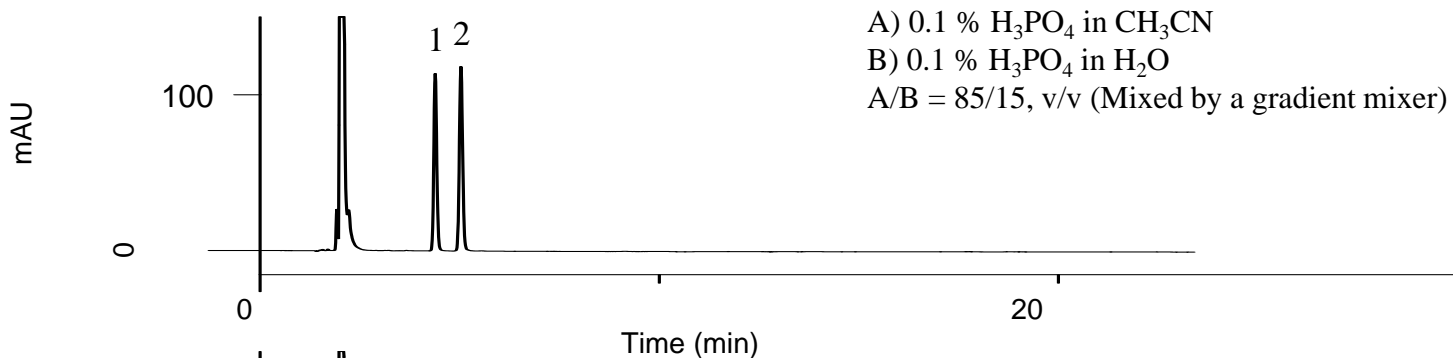


InertSearch™ for LC

Inertsil® Applications

Analysis of EPA and DHA

Data No. LB357-0659



Conditions

System : GL7700 HPLC system
Column : Inertsil ODS-4
(3 μm, 150 x 4.6 mm I.D.)
Column Cat. No. : 5020-04045
Eluent : Mentioned in each chromatogram
Flow Rate : 1.0 mL/min
Col. Temp. : 40 °C
Detection : UV 210 nm (PD7752 PDA Detector)
Injection Vol. : 1 μL
Sample : Standard

Analyte:

1. EPA, *cis*-5,8,11,14,17-Eicosapentaenoic acid
(C20:5, M.W. 302.45) 0.125 mg/mL
2. DHA, *cis*-4,7,10,13,16,19-Docosahexaenoic acid
(C22:6, M.W. 328.49) 0.125 mg/mL
(dissolved in EtOAc each)