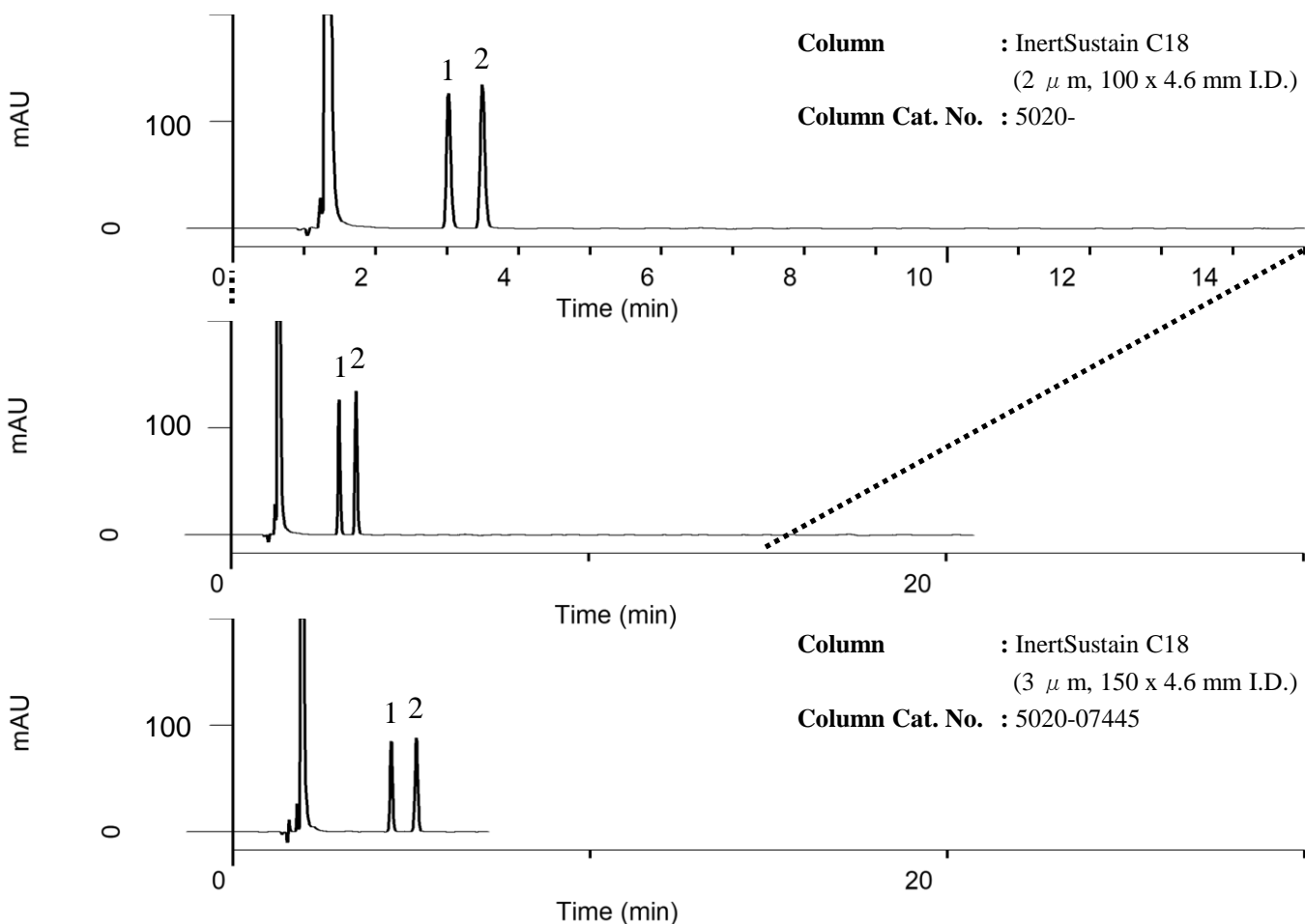


Analysis of EPA and DHA

(Under the Condition of the Japanese Pharmacopoeia)



Conditions

System : GL7700 HPLC system
Column : Mentioned in each chromatogram
Column Cat. No. : Mentioned in each chromatogram
Eluent : A) 0.1 % CH₃COOH in CH₃CN
 B) 0.1 % CH₃COOH in H₂O
 A/B = 85/15, v/v (Mixed by a gradient mixer)
Flow Rate : 1.0 mL/min
Col. Temp. : 40 °C
Detection : UV 210 nm (PD7752 PDA Detector)
Injection Vol. : 1 μL
Sample : Standard

Analyte:

- EPA, *cis*-5,8,11,14,17-Eicosapentaenoic acid
(C20:5, M.W. 302.45) 0.125 mg/mL
- DHA, *cis*-4,7,10,13,16,19-Docosahexaenoic acid
(C22:6, M.W. 328.49) 0.125 mg/mL
(dissolved in EtOAc each)