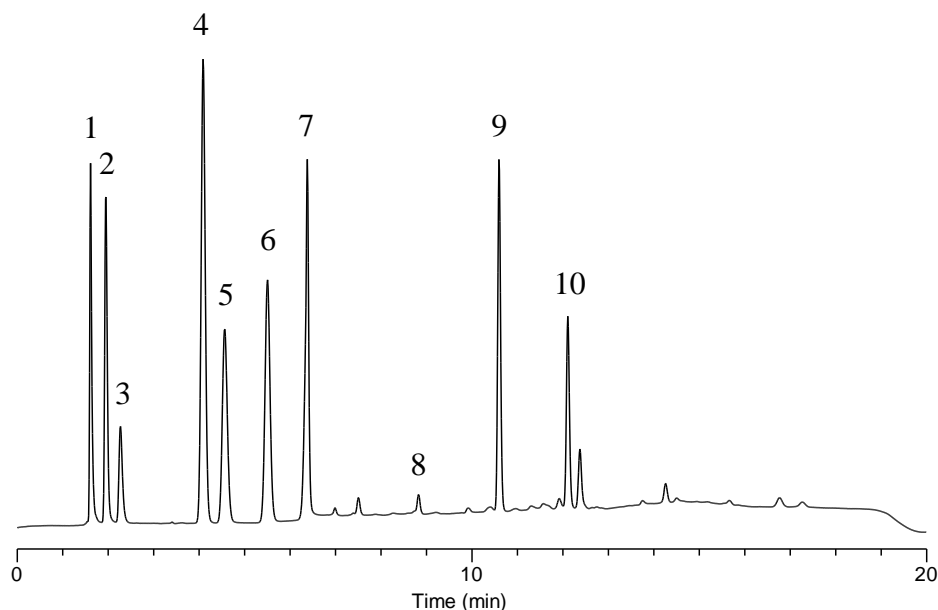


## Analysis of Water-soluble Vitamins



### Conditions

**System** : GL7700 HPLC system  
**Column** : InertSustain AQ-C18  
 (5  $\mu$  m, 150 x 4.6 mm I.D.)  
**Column Cat. No.** : 5020-89730  
**Eluent** : A) CH<sub>3</sub>CN  
 B) 10 mM NaH<sub>2</sub>PO<sub>4</sub> in H<sub>2</sub>O (pH 2.5, H<sub>3</sub>PO<sub>4</sub>)

Time (min)	A (vol%)	B (vol%)
0.0	0.5	99.5
10.0	25	75
15.0	25	75
15.1	0.5	99.5
20.0	0.5	99.5

**Flow Rate** : 1.0 mL/min  
**Col. Temp.** : 40 °C  
**Detection** : UV 210 nm (PD7752 PDA Detector)  
**Injection Vol.** : 5  $\mu$  L  
**Sample** : Standard

### Analyte:

1. Ascorbic acid	100 mg/L
2. Pyridoxamine	20 mg/L
3. Thiamine	20 mg/L
4. Nicotinic acid	20 mg/L
5. Pyridoxal	20 mg/L
6. Nicotinamide	20 mg/L
7. Pyridoxine	20 mg/L
8. Pantothenic acid	100 mg/L
9. Folic acid	20 mg/L
10. Riboflavin	20 mg/L