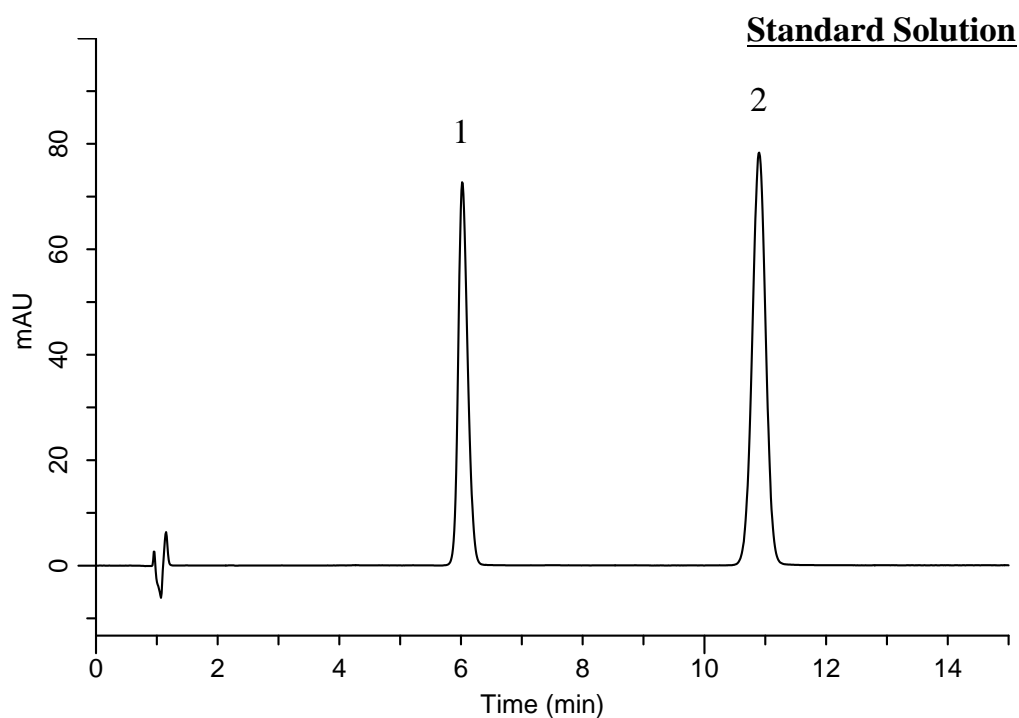


### Analysis of Lidocaine

Data No. LB375-0894



#### Conditions

**System** : GL7700 HPLC system  
**Column** : InertSustain C18  
(5  $\mu$  m, 150 x 4.0 mm I.D.)  
**Column Cat. No.** : 5020-07335  
**Eluent** : A) CH<sub>3</sub>CN  
B) Buffer\*  
A/B = 45/55, v/v + 2.88 g/L Sodium lauryl sulfate  
**Flow Rate** : 1.1 mL/min  
**Col. Temp.** : 27 °C  
**Detection** : UV 254 nm (PD7752 PDA Detector)  
**Injection Vol.** : 5  $\mu$ L  
**Sample** : Standard

\* Buffer: Dissolve 3.1 g of sodium dihydrogenphosphate dihydrate in 1,000 mL of water.  
Adjust pH 3.0 by diluted phosphoric acid.

#### Analyte:

1. Lidocaine 1.7 mg/mL  
2. Benzophenone 0.05 mg/mL

Resolution (1, 2) : 14.2