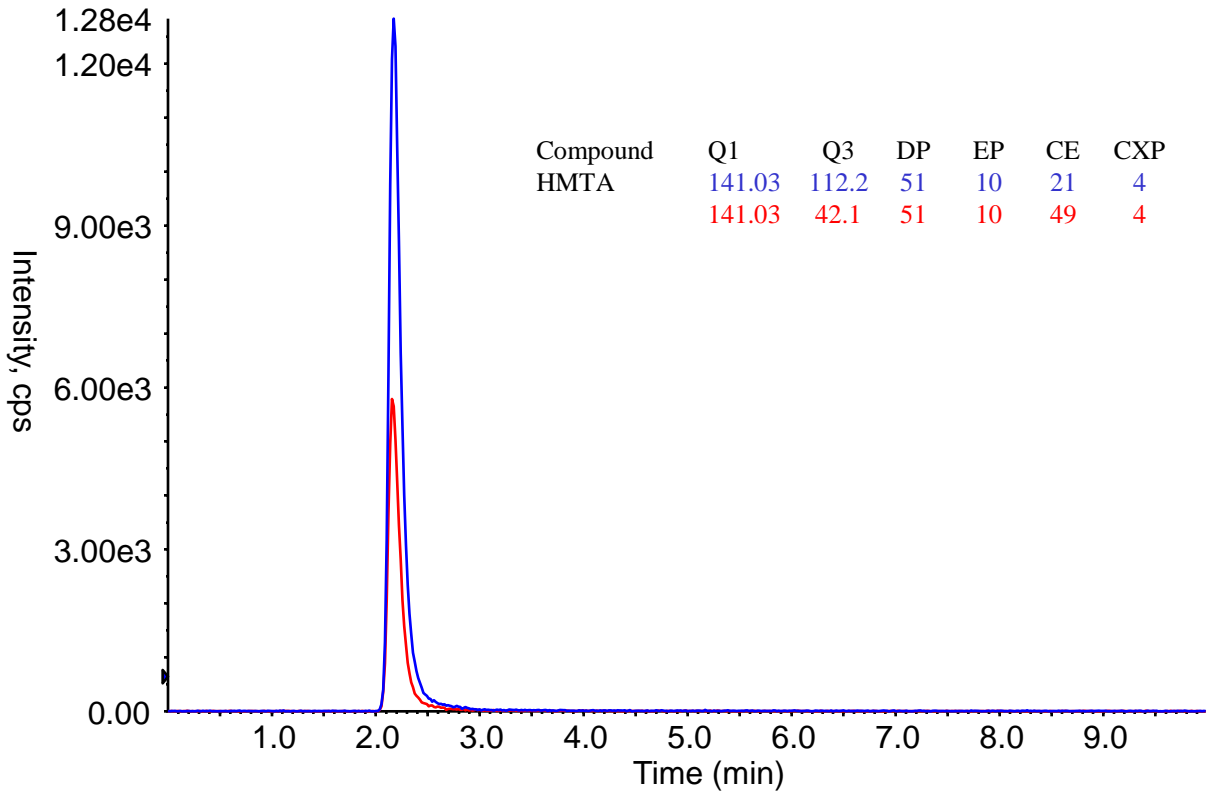


Analysis of Hexamethylenetetramine (HMTA)



Conditions

System : LC800 HPLC system
Column : Inertsil HILIC
 (3 μm, 150 x 2.1 mm I.D.)
Column Cat. No. : 5020-07765
Eluent : A) 10 mM Ammonium acetate in 90 % CH₃CN
 B) 10 mM Ammonium acetate in H₂O
 A/B = 60/40, v/v
Flow Rate : 0.2 mL/min
Col. Temp. : 40 °C
Detection : LC/MS/MS (3200 QTRAP® : ESI, Positive, MRM)

CUR	CAD	IS	TEM	GS1	GS2
20	4	5500	500	70	70

Injection Vol. : 10 μL
Sample : Standard

Analyte:

1. Hexamethylenetetramine 100 μg/L