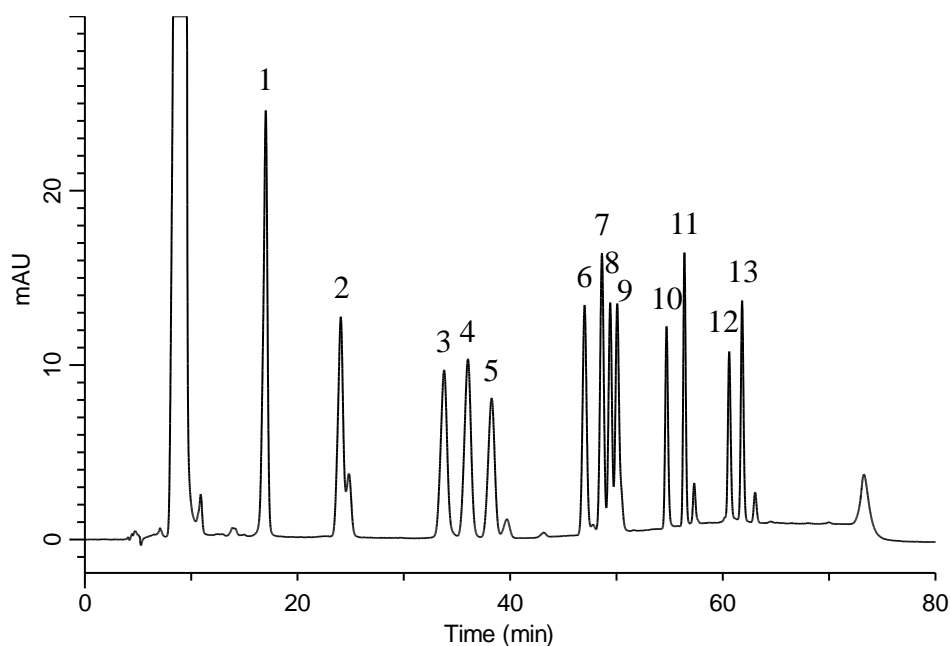


Analysis of 13 kinds of Aldehydes (Directed by Pre-Column Method with DNPH)



Conditions

System : GL7700 HPLC system
Column : InertSustain AQ-C18 HP
 (3 μ m, 250 x 4.6 mm I.D.)
Column Cat. No. : 5020-89937
Eluent : A) CH₃OH
 B) H₂O

Time (min)	A (vol%)	B (vol%)
0.0	65	35
30.0	65	35
50.0	85	15
65.0	85	15
66.0	65	35
80.0	65	35

Flow Rate : 0.6 mL/min
Col. Temp. : 40 °C
Detection : UV 360 nm (PD7752 PDA Detector)
Injection Vol. : 20 μ L
Sample : Standard

Analyte:

1. DNPH-Formaldehyde	0.3 mg/L
2. DNPH-Acetaldehyde	0.3 mg/L
3. DNPH-Acrolein	0.3 mg/L
4. DNPH-Acetone	0.3 mg/L
5. DNPH-Propionaldehyde	0.3 mg/L
6. DNPH-Crotonaldehyde	0.3 mg/L
7. DNPH-Methacrolein	0.3 mg/L
8. DNPH- <i>n</i> -Butyraldehyde	0.3 mg/L
9. DNPH-Methylethylketone	0.3 mg/L
10. DNPH-Benzaldehyde	0.3 mg/L
11. DNPH- <i>n</i> -Valeraldehyde	0.3 mg/L
12. DNPH- <i>m</i> -Tolualdehyde	0.3 mg/L
13. DNPH-Hexanal	0.3 mg/L