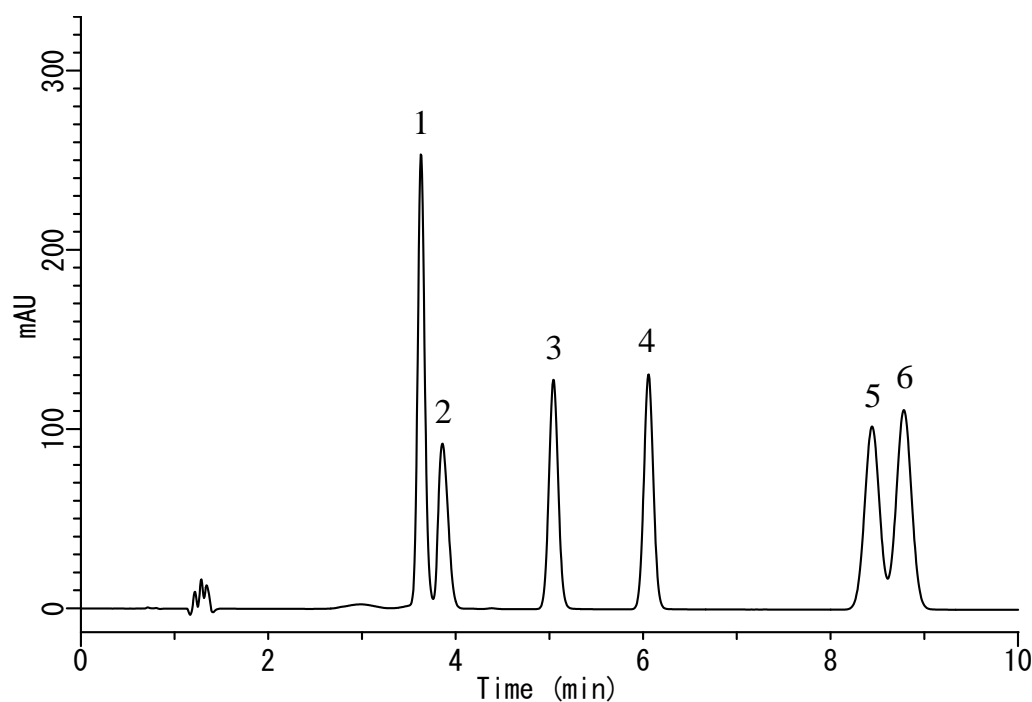


InertSearch™ for LC

Inertsil® Applications

Analysis of Hippuric Acids

Data No. LB378-0696



Conditions

System : GL-7400 HPLC system
Column : InertSustain AQ-C18 HP
(3 μ m, 150 x 4.6 mm I.D.)
Column Cat. No. : 5020-89936
Eluent : A) 2-Propanol
B) 10 mM KH_2PO_4 + 2 mM IPCC-09 in H_2O
(IPCC-09: Sodium 1 - Nonanesulfonate)
(pH 2.5, H_3PO_4)
A/B = 10/90, v/v
Flow Rate : 1.5 mL/min
Col. Temp. : 40 $^\circ\text{C}$
Detection : UV 220 nm
Injection Vol. : 10 μ L
Sample : Standard

Analyte:

1. Hippuric acid	50 mg/L
2. Mandelic acid	50 mg/L
3. <i>o</i> -Methylhippuric acid	50 mg/L
4. Creatinine	50 mg/L
5. <i>p</i> -Methylhippuric acid	50 mg/L
6. <i>m</i> -Methylhippuric acid	50 mg/L