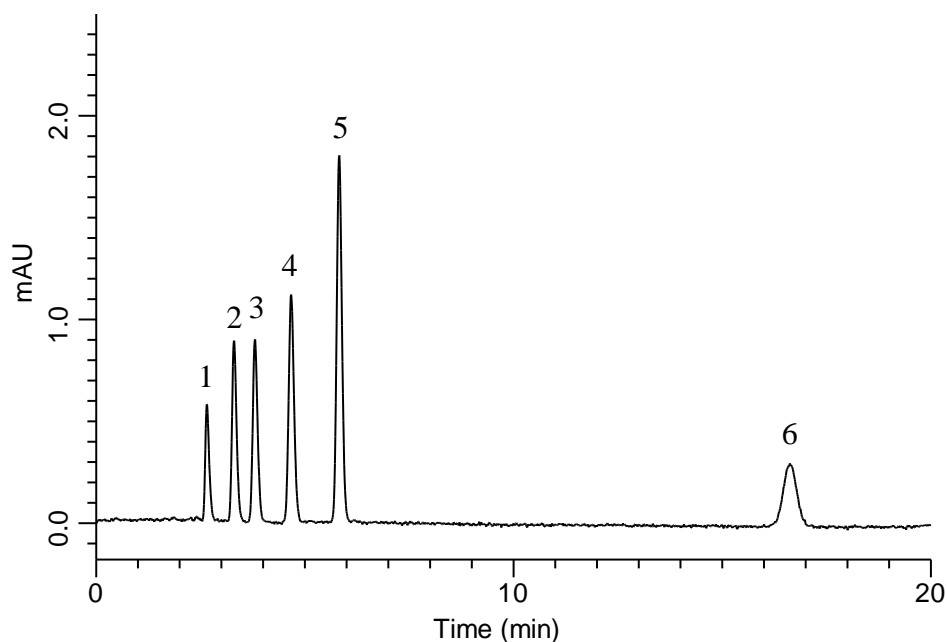


## Analysis of ATP related compounds



### Conditions

**System** : GL7700 HPLC system  
**Column** : InertSustain AQ-C18  
 (5  $\mu$  m, 150 x 4.6 mm I.D.)  
**Column Cat. No.** : 5020-89730  
**Eluent** : 50 mM  $K_2HPO_4$  in  $H_2O$  (pH 7.0,  $H_3PO_4$ )  
**Flow Rate** : 1.0 mL/min  
**Col. Temp.** : 40 °C  
**Detection** : UV 260 nm  
**Injection Vol.** : 1  $\mu$  L  
**Sample** : Standard

### Analyte:

1. Inosinic acid	5 mg/L
2. Adenosine triphosphate	5 mg/L
3. Adenosine diphosphate	5 mg/L
4. Adenosine monophosphate	5 mg/L
5. Hypoxanthine	5 mg/L
6. Inosine	5 mg/L