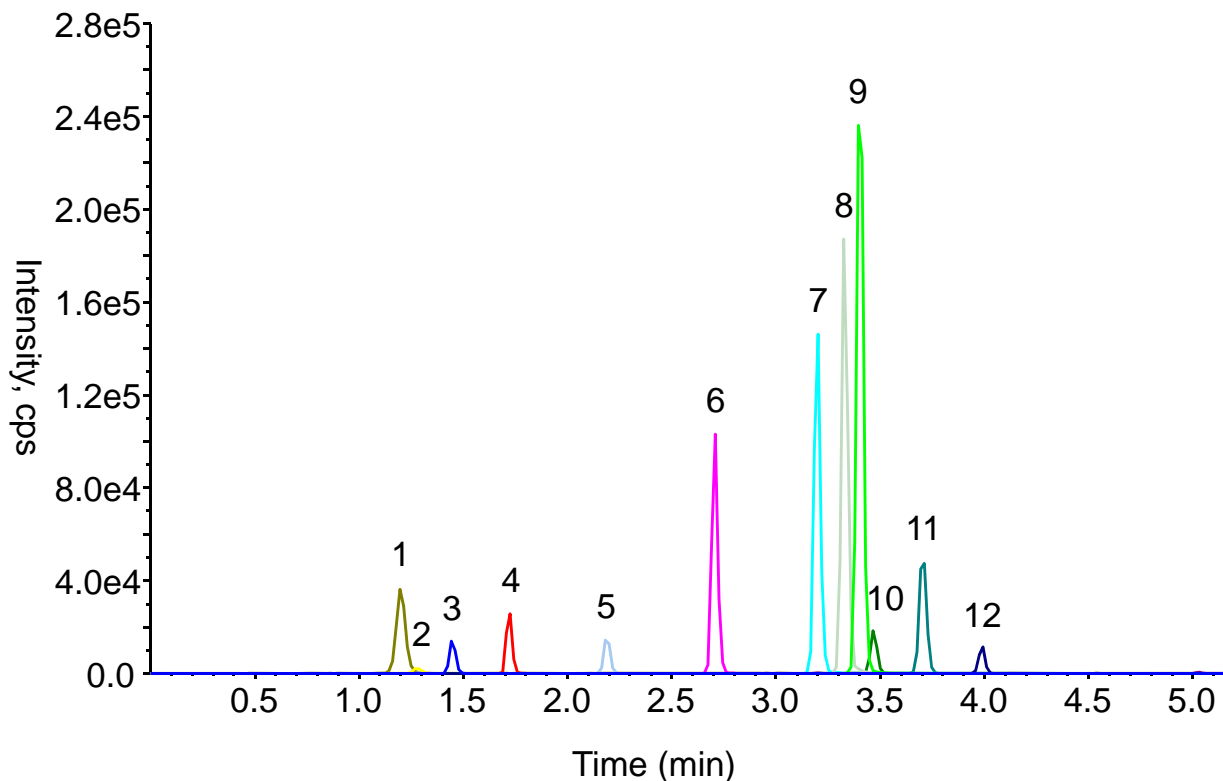


# InertSearch™ for LC

Inertsil® Applications

## Analysis of 12 Drugs

Data No. LB389-0785



### Conditions

**System** : LC800 HPLC system  
**Column** : InertSustainSwift C18 HP  
(3  $\mu$  m, 50 x 2.1 mm I.D.)  
**Column Cat. No.** : 5020-88210  
**Eluent** : A) 0.1 % HCOOH in CH<sub>3</sub>CN  
B) 0.1 % HCOOH in H<sub>2</sub>O  
A/B = 5/95 -5 min- 95/5, v/v  
**Flow Rate** : 0.4 mL/min  
**Col. Temp.** : 40 °C  
**Detection** : LC/MS/MS (4000 QTRAP® : ESI, Positive, MRM)  
CUR CAD IS TEM GS1 GS2  
20 8 5500 700 60 30  
**Injection Vol.** : 10  $\mu$  L  
**Sample** : Standard

### Analyte:

1. Acetaminophen
2. Atenolol
3. Theophylline
4. Caffeine
5. Metoprolol
6. Propranolol
7. Amitriptyline
8. Chlorpromazine
9. Clomipramine
10. Ketoprofen
11. Warfarin
12. Indometacin  
(100  $\mu$  g/L each)