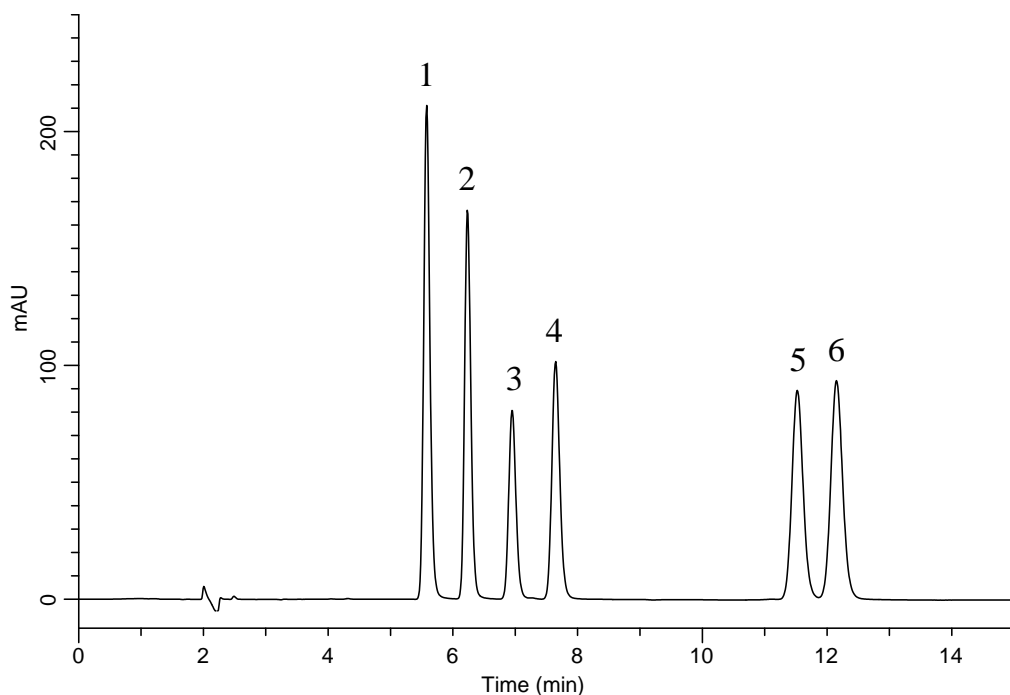


InertSearch™ for LC

Inertsil® Applications

Analysis of Hippuric acid

Data No. LB406-0894



Conditions

System : GL7700 HPLC system
Column : InertSustain AQ-C18 HP
(3 μ m, 150 x 4.6 mm I.D.)
Column Cat. No. : 5020-89936
Eluent : A) 2-Propanol
B) THF
C) 10 mM KH_2PO_4 + 2 mM IPCC-09 in H_2O
(IPCC-09: Sodium 1 - Nonanesulfonate)
(pH 2.5, H_3PO_4)
A/B/C = 5/5/90, v/v/v
Flow Rate : 1.0 mL/min
Col. Temp. : 40 $^\circ\text{C}$
Detection : UV 220 nm (UV7750 UV Detector)
Injection Vol. : 10 μ L
Sample : Standard

Analyte:

1. Hippuric acid
2. Creatinine
3. Mandelic acid
4. *o*-Methylhippuric acid
5. *p*-Methylhippuric acid
6. *m*-Methylhippuric acid
(50 mg/L each)