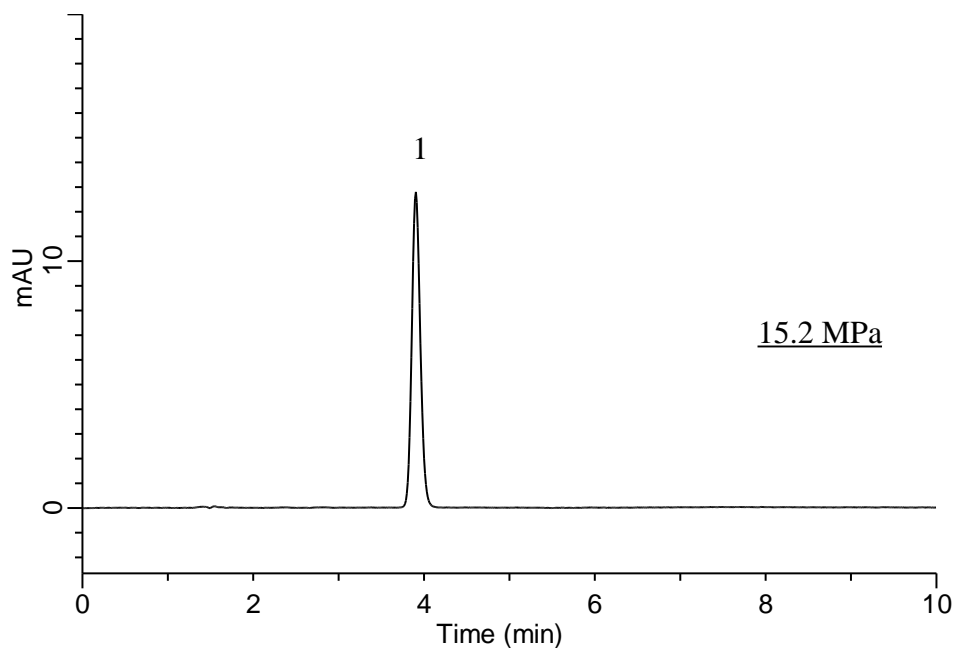


## Analysis of Fluconazole

(Under the Condition of the Japanese Pharmacopoeia, Fluconazole Capsules)



### Conditions

**System** : GL7700 HPLC system  
**Column** : Inertsil WP300 C18  
 (4  $\mu$  m, 150 x 3.9 mm I.D.)  
**Column Cat. No.** : 5020-89606  
**Eluent** : A) CH<sub>3</sub>OH  
 B) CH<sub>3</sub>CN  
 C) 0.82 g/L Sodium acetate anhydrous in H<sub>2</sub>O  
 (pH 5.0, CH<sub>3</sub>COOH)  
 A/B/C = 20/10/70, v/v/v  
**Flow Rate** : 1.0 mL/min  
**Col. Temp.** : 35 °C  
**Detection** : UV 261 nm (PD7752 PDA Detector)  
**Injection Vol.** : 20  $\mu$  L  
**Sample** : Standard

### Analyte:

1. Fluconazole 50 mg/L  
 Theoretical plates : 7,355 ( $\geq$  3,000)  
 Tailing factor : 1.13 ( $\leq$  1.5)  
 RSD of the  
 peak area (%) (n=6) : 0.17 ( $\leq$  1.0)