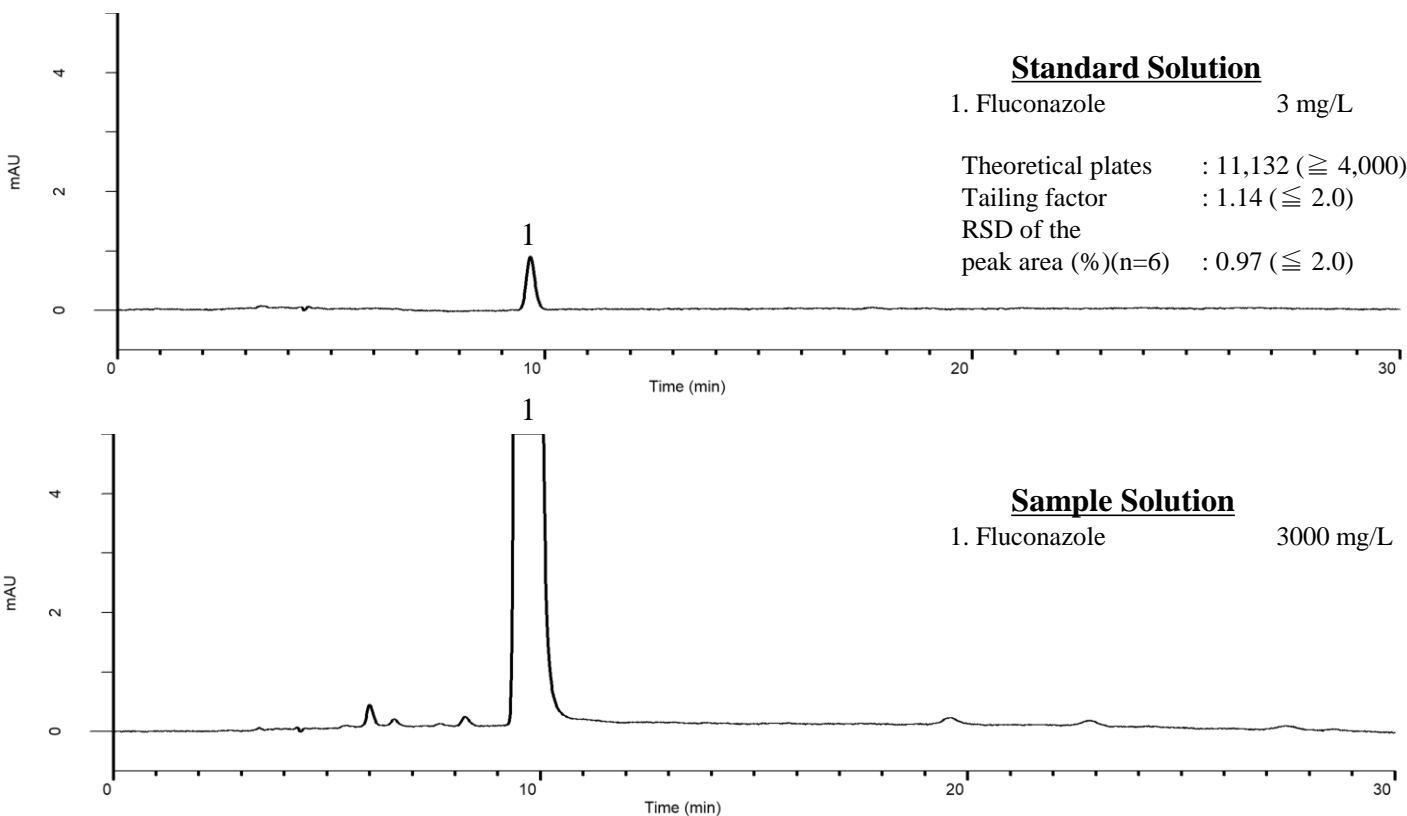


## Analysis of Fluconazole

(Under the Condition of the Japanese Pharmacopoeia)



### Conditions

**System** : GL7700 HPLC system

**Column** : InertSustainSwift C18  
(5  $\mu$  m, 150 x 4.6 mm I.D.)

**Column Cat. No.** : 5020-88026

**Eluent** : A) CH<sub>3</sub>CN  
B) H<sub>2</sub>O  
A/B = 20/80, v/v

**Flow Rate** : 0.5 mL/min

**Col. Temp.** : 40 °C

**Detection** : UV 260 nm (PD7752 PDA Detector)

**Injection Vol.** : 20  $\mu$  L

**Sample** : Standard

### Analyte:

1. Fluconazole