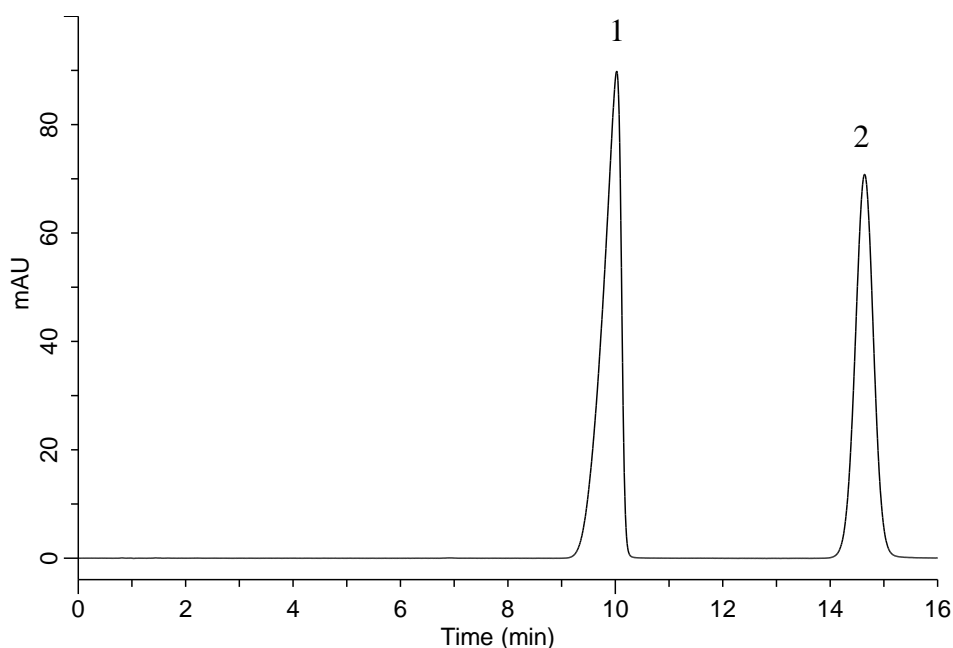


Analysis of Mesalazine

(Under the Condition of the draft for the Japanese Pharmacopoeia,
Mesalazine Extended-release Tablets)



Conditions

System : GL7700 HPLC system
Column : Inertsil ODS-4
 (5 μ m, 100 x 4.0 mm I.D.)
Column Cat. No. : 5020-03934
Eluent : Solution*
Flow Rate : 0.83 mL/min
Col. Temp. : 40 °C
Detection : UV 300 nm (PD7752 PDA Detector)
Injection Vol. : 10 μ L
Sample : Standard

Analyte:

1. Mesalazine	160 mg/L
2. Ethyl <i>p</i> -Aminobenzoate	50 mg/L

Resolution (1,2) : 7.3 (≥ 3)

* Dissolve 0.865 g of sodium lauryl sulfate, 0.679 g of tetrabutylammonium hydrogensulfate, and 1 mL of phosphoric acid in 400 mL of methanol. Add water to make 1000 mL.