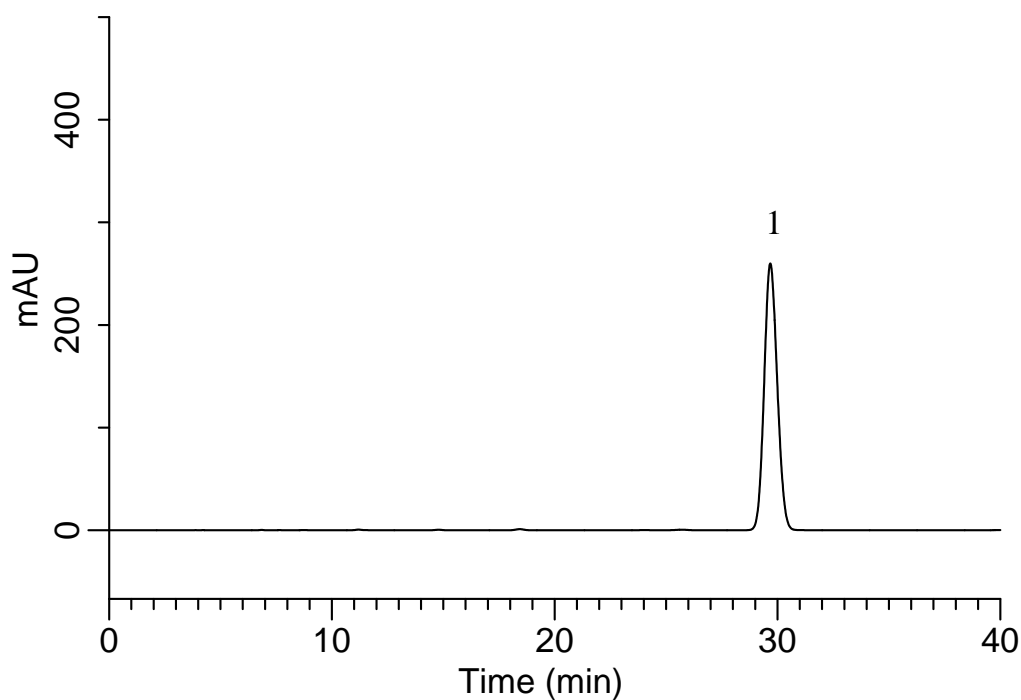


## Analysis of Medroxyprogesterone acetate

(Under the Condition of the draft for the Japanese Pharmacopoeia)

Data No. LB411-0894



### Conditions

**System** : GL7700 HPLC system  
**Column** : Inertsil WP300 C18  
(5  $\mu$  m, 250 x 4.6 mm I.D.)  
**Column Cat. No.** : 5020-05846  
**Eluent** : A) CH<sub>3</sub>CN  
B) H<sub>2</sub>O  
A/B = 40/60, v/v/  
**Flow Rate** : 1.7 mL/min  
**Col. Temp.** : 25 °C  
**Detection** : UV 254 nm (PD7752 PDA Detector)  
**Injection Vol.** : 10  $\mu$  L  
**Sample** : Standard

### Analyte:

1. Medroxyprogesterone acetate 1000 mg/L

Theoretical plates : 11,977 ( $\geq$  5,000)  
Tailing factor : 1.10 ( $\leq$  2.0)  
RSD of the  
peak area (n=6) : 0.10 ( $\leq$  1.0)