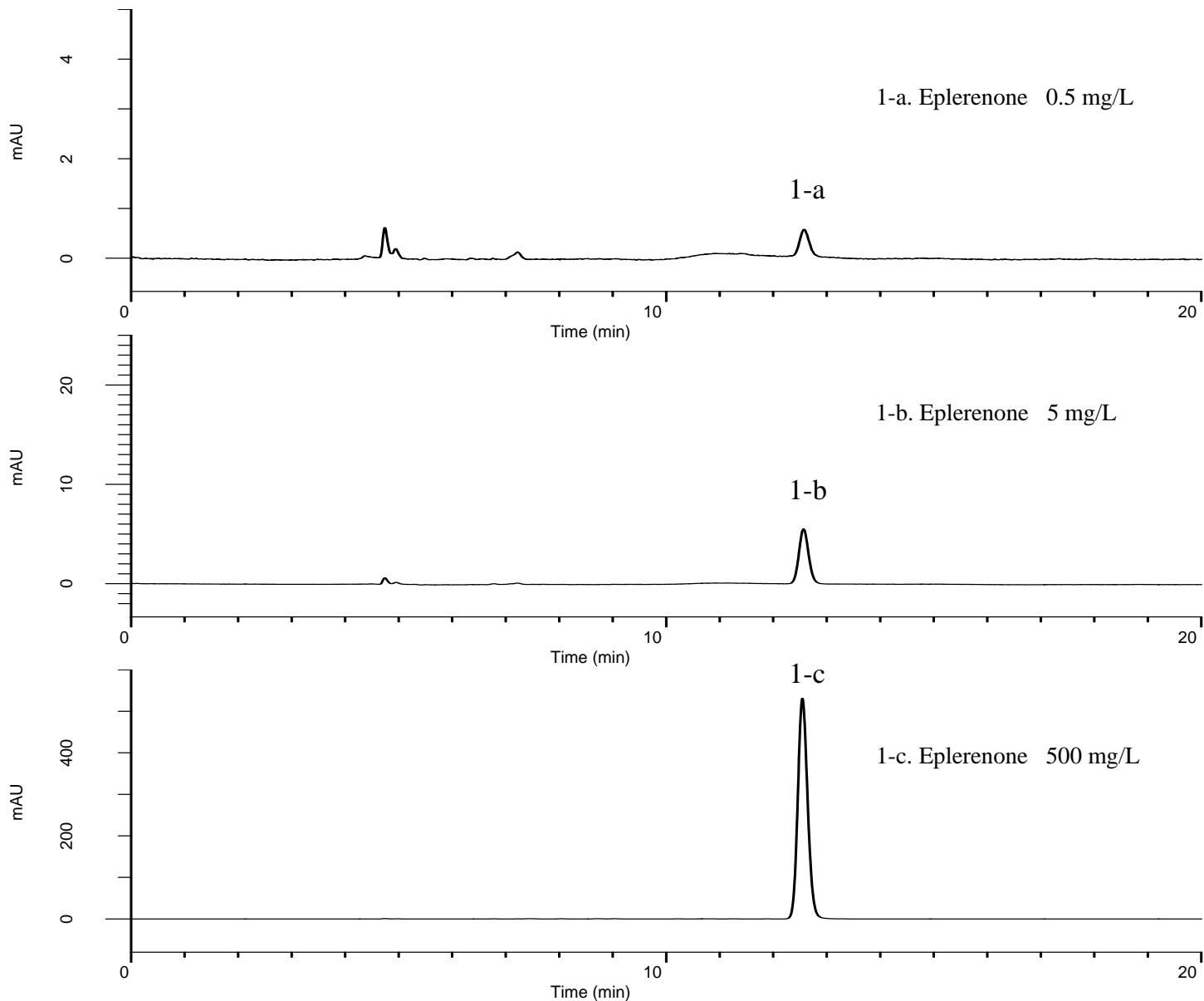


### Analysis of Eplerenone

(Under the Condition of the draft for the Japanese Pharmacopoeia)

Data No. LB412-0894



#### Conditions

**System** : GL7700 HPLC system  
**Column** : InertSustainSwift C18  
 (5  $\mu$  m, 250 x 4.6 mm I.D.)  
**Column Cat. No.** : 5020-88027  
**Eluent** : A) CH<sub>3</sub>OH  
 B) CH<sub>3</sub>CN  
 C) 10 mM KH<sub>2</sub>PO<sub>4</sub> in H<sub>2</sub>O (pH 3.0, H<sub>3</sub>PO<sub>4</sub>)  
 A/B/C = 6/36/58, v/v/v  
**Flow Rate** : 0.9 mL/min  
**Col. Temp.** : 35 °C  
**Detection** : UV 210 nm (PD7752 PDA Detector)  
**Injection Vol.** : 20  $\mu$  L  
**Sample** : Standard

#### Analyte:

1. Eplerenone

The peak area ratio of 1-a to 1-b :  $(7 \leq) 9.5 (\leq 13)$

Theoretical plate number of 1-b :  $22,866 (\geq 15,000)$

Tailing factor of 1-b :  $1.09 (\leq 1.5)$

RSD of the  
 1-b area (%) (n = 6) :  $0.28 (\leq 2.0)$