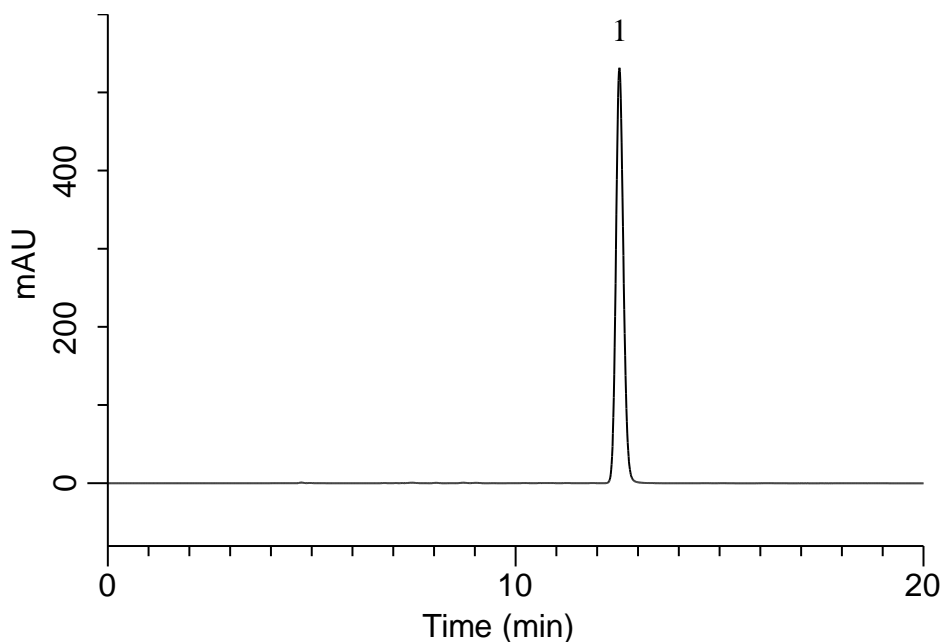


Analysis of Eplerenone

(Under the Condition of the draft for the Japanese Pharmacopoeia)



Conditions

System : GL7700 HPLC system
Column : InertSustainSwift C18
 (5 μ m, 250 x 4.6 mm I.D.)
Column Cat. No. : 5020-88027
Eluent : A) CH₃OH
 B) CH₃CN
 C) 10 mM KH₂PO₄ in H₂O (pH 3.0, H₃PO₄)
 A/B/C = 6/36/58, v/v/v
Flow Rate : 0.9 mL/min
Col. Temp. : 35 °C
Detection : UV 210 nm (PD7752 PDA Detector)
Injection Vol. : 20 μ L
Sample : Standard

Analyte:

1. Eplerenone 500 mg/L

Theoretical plates : 22,422 (\geq 15,000)
 Tailing factor : 1.12 (\leq 1.5)
 RSD of the
 peak area (%) (n=6) : 0.06 (\leq 1.0)