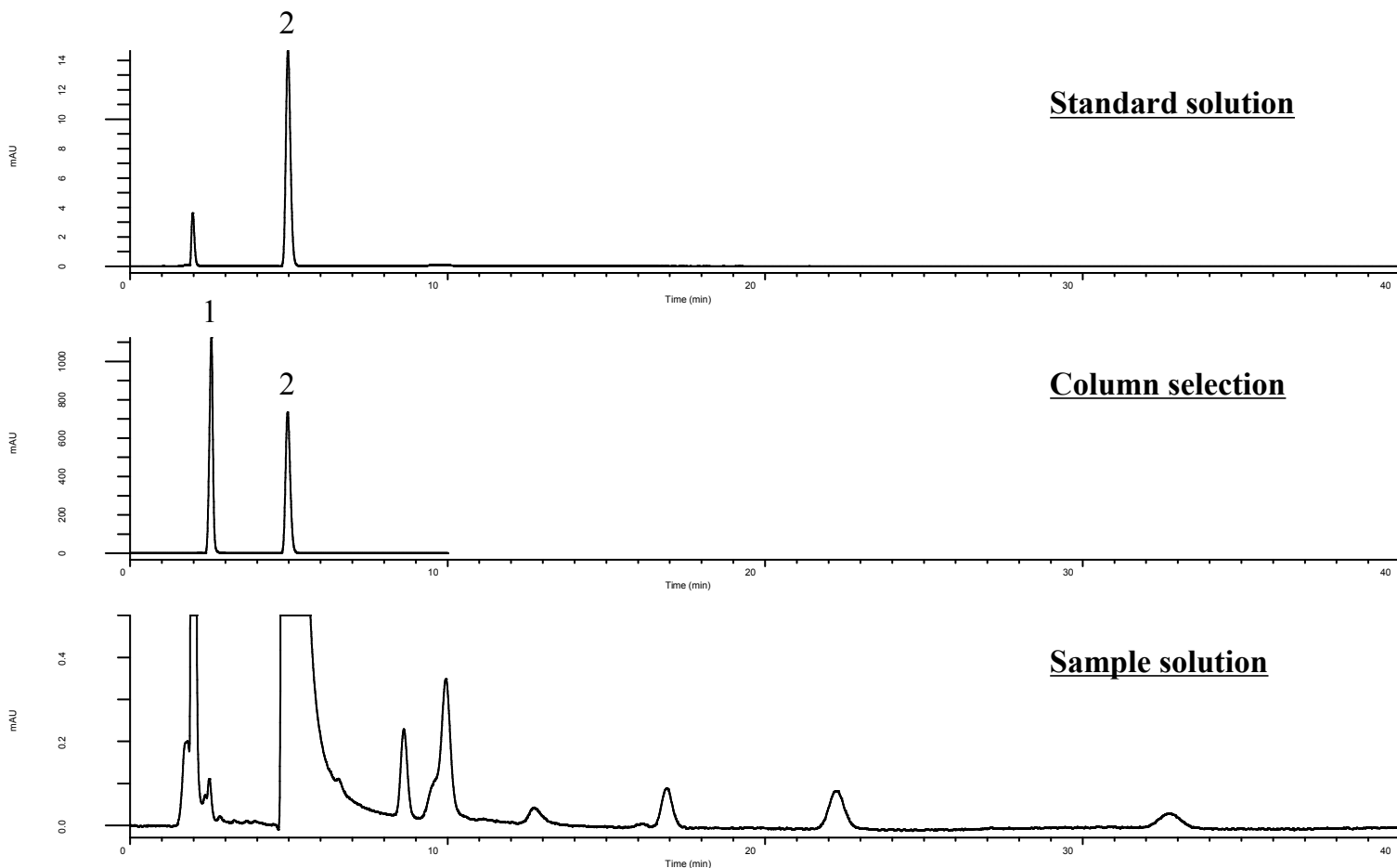


Analysis of Acetaminophen

(Under the Condition of the Japanese Pharmacopoeia)

Data No. LB419-0952



Conditions

System : GL7700 HPLC system
Column : InertSustain C18
(5 μ m, 150 x 4.0 mm I.D.)
Column Cat. No. : 5020-07335
Eluent : A) CH₃OH
B) 50 mM KH₂PO₄ in H₂O
(pH 4.7, 0.1 mol/L NaOH in H₂O)
A/B = 1/4, v/v
Flow Rate : 0.65 mL/min
Col. Temp. : 40 °C
Detection : UV 225 nm (UV7750 UV-VIS Detector)
Injection Vol. : 10 μ L

Analyte:

1. *p*-Aminophenol
2. Acetaminophen

Resolution (1, 2) : 10.6 (\geq 7.0)