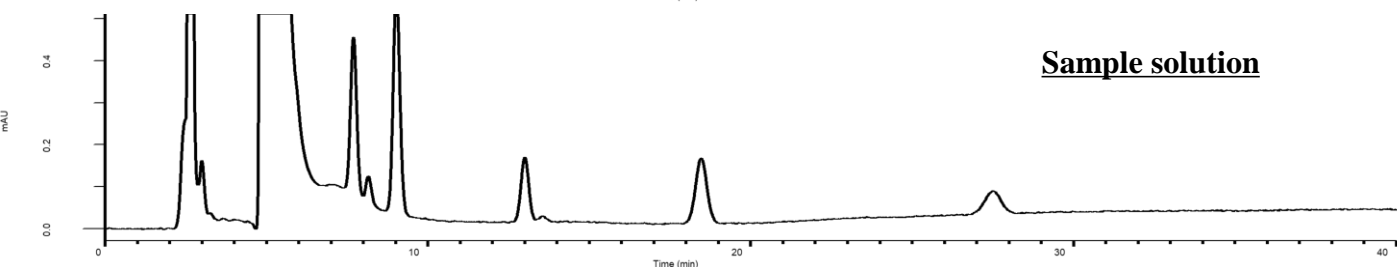
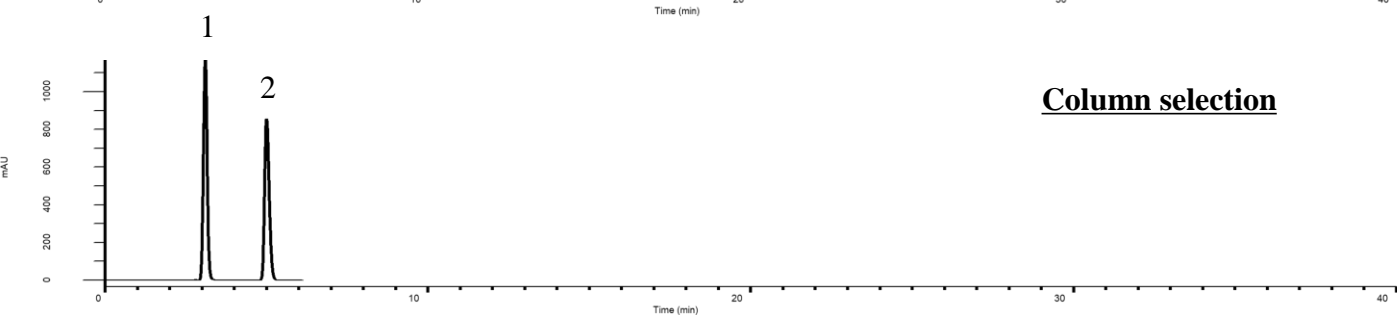
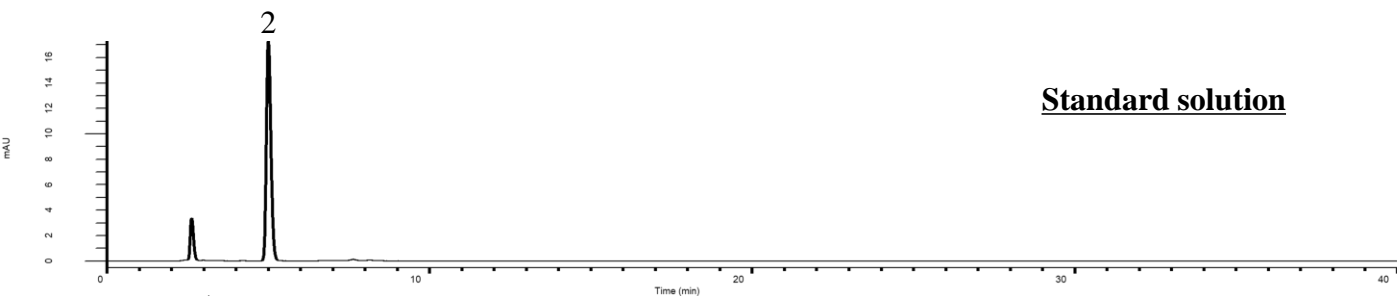


Analysis of Acetaminophen

(Under the Condition of the Japanese Pharmacopoeia)



Conditions

System : GL7700 HPLC system
Column : InertSustainSwift C18
 (5 μ m, 150 x 4.0 mm I.D.)
Column Cat. No. : 5020-88019
Eluent : A) CH₃OH
 B) 50 mM KH₂PO₄ in H₂O
 (pH 4.7, 0.1 mol/L NaOH in H₂O)
 A/B = 1/4, v/v
Flow Rate : 0.57 mL/min
Col. Temp. : 40 °C
Detection : UV 225 nm (UV7750 UV-VIS Detector)
Injection Vol. : 10 μ L

Analyte:

1. *p*-Aminophenol
 2. Acetaminophen

Resolution (1, 2) : 8.2 (\geq 7.0)