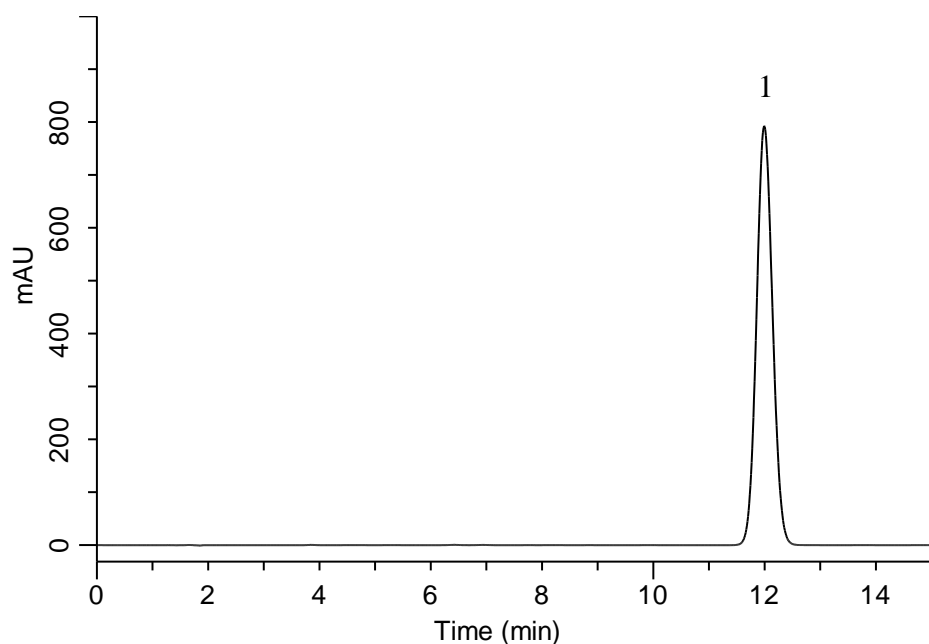


## Analysis of Eplerenone

(Under the Condition of the Japanese Pharmacopoeia 17th edition, Eplerenone Tablets)



### Conditions

**System** : GL7700 HPLC system  
**Column** : Inertsil ODS-3  
 (4  $\mu$  m, 150 x 4.6 mm I.D.)  
**Column Cat. No.** : 5020-04645  
**Eluent** : A) CH<sub>3</sub>CN  
 B) CH<sub>3</sub>OH  
 C) Buffer\*  
 A/B/C = 9/36/55, v/v/v  
**Flow Rate** : 1.15 mL/min  
**Col. Temp.** : 25 °C  
**Detection** : UV 243 nm (PD7752 PDA Detector)  
**Injection Vol.** : 15  $\mu$  L  
**Sample** : Standard

### Analyte:

1. Eplerenone 500 mg/L

Theoretical plate number : 8,161 ( $\geq$  3,000)  
 Tailing factor : 1.08 ( $\leq$  2.0)  
 RSD of the area (%) (n = 6) : 0.03 ( $\leq$  1.0)

\*Dissolve 1.4 g of monobasic potassium phosphate in 1000 mL of water, Adjust to pH 3.0 with phosphoric acid.