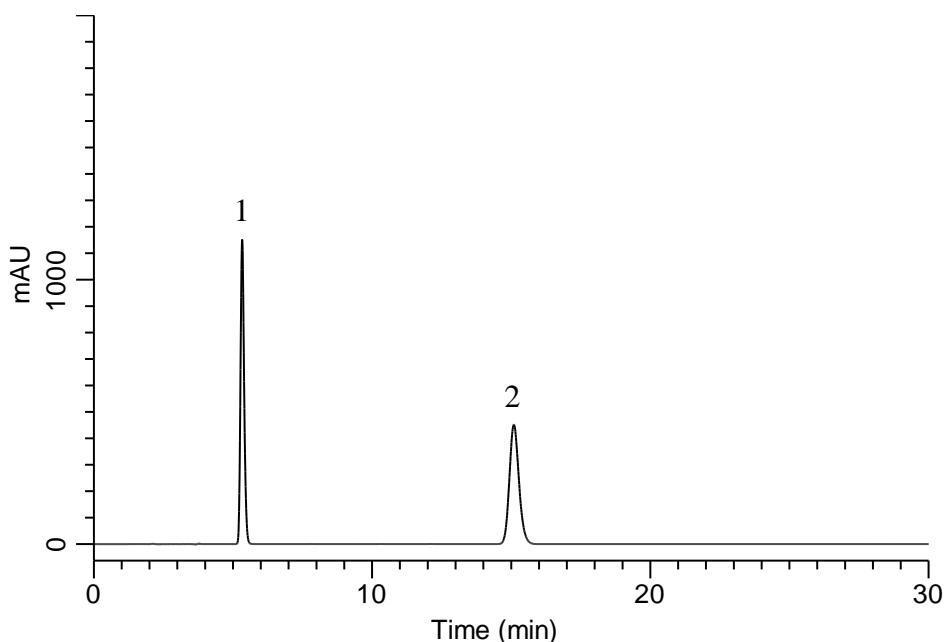


Analysis of Diflorason Diacetate

(Under the Condition of the Japanese Pharmacopoeia 17th edition)



Conditions

System : GL7700 HPLC system
Column : InertSustain C18
 (5 μ m, 150 x 6.0 mm I.D.)
Column Cat. No. : 5020-07355
Eluent : A) CH₃CN
 B) THF
 C) Buffer*
 A/B/C = 40/10/55, v/v/v
Flow Rate : 1.1 mL/min
Col. Temp. : 25 °C
Detection : UV 254 nm (PD7752 PDA Detector)
Injection Vol. : 10 μ L
Sample : Standard

Analyte:

1. *p*-Hydroxybenzoic acid methyl ester 200 mg/L
 2. Diflorason diacetate 1000 mg/L

Resolution (1, 2) : 22.9 (≥ 9)
 RSD of the peak
 area ratio of
 2 to 1 (%) (n=6) : 0.05 (≤ 1.0)

*Dissolve 6.8 g of monobasic potassium phosphate in 1000 mL of water,
 Adjust to pH 4.0 with diluted phosphoric acid (1 \rightarrow 200).