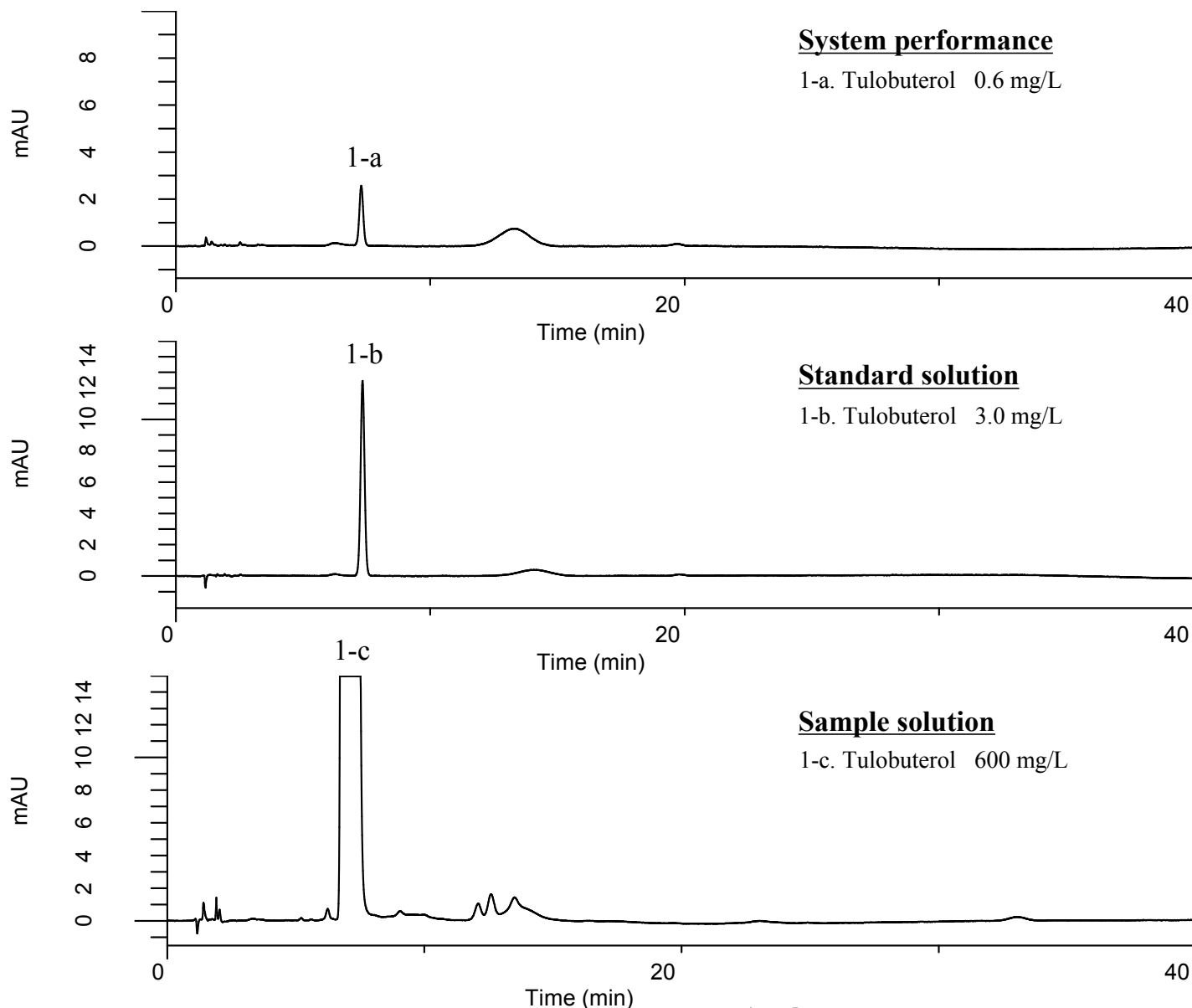


Analysis of Tulobuterol Hydrochloride

(Under the Condition of the Japanese Pharmacopoeia 17th edition)

Data No. LB430-0894



Conditions

System : GL7700 HPLC system
Column : InertSustain C18
 (5 μ m, 150 x 4.6 mm I.D.)
Column Cat. No. : 5020-07345
Eluent : A) CH₃CN
 B) Buffer*
 A/B = 35/65, v/v
Flow Rate : 0.8 mL/min
Col. Temp. : 30 °C
Detection : UV 215 nm (PD7752 PDA Detector)
Injection Vol. : 25 μ L
Sample : Standard

Analyte

1. Tulobuterol hydrochloride

Theoretical plate number of 1-b : 10,041 ($\geq 5,000$)
 Tailing factor : 1.00 (≤ 2.0)
 RSD of the
 1-b area (%) (n = 6) : 0.26 (≤ 2.0)

*Dissolve 3.0 g of Sodium 1-octanesulfonate in 900 mL of water,
 Add 5.0 mL of diluted phosphoric acid (1 \rightarrow 150).