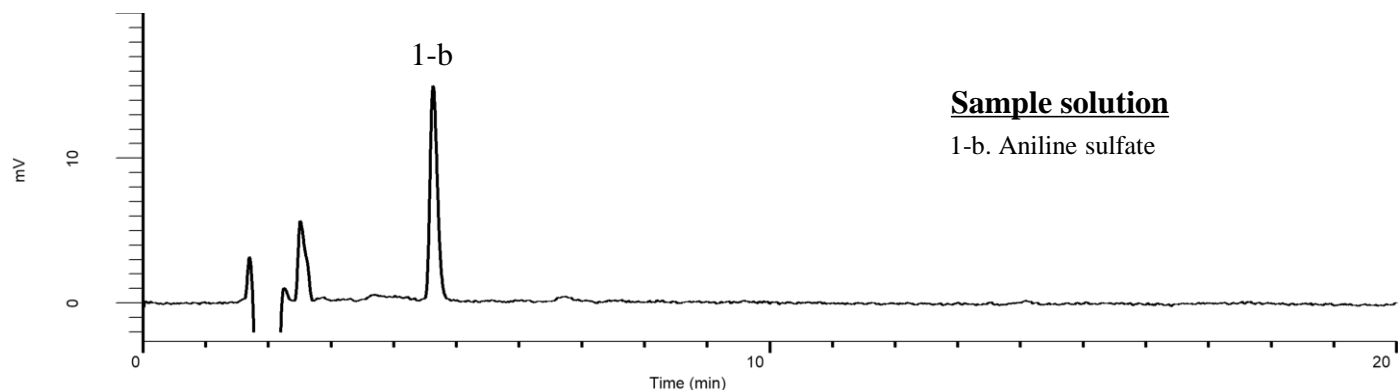
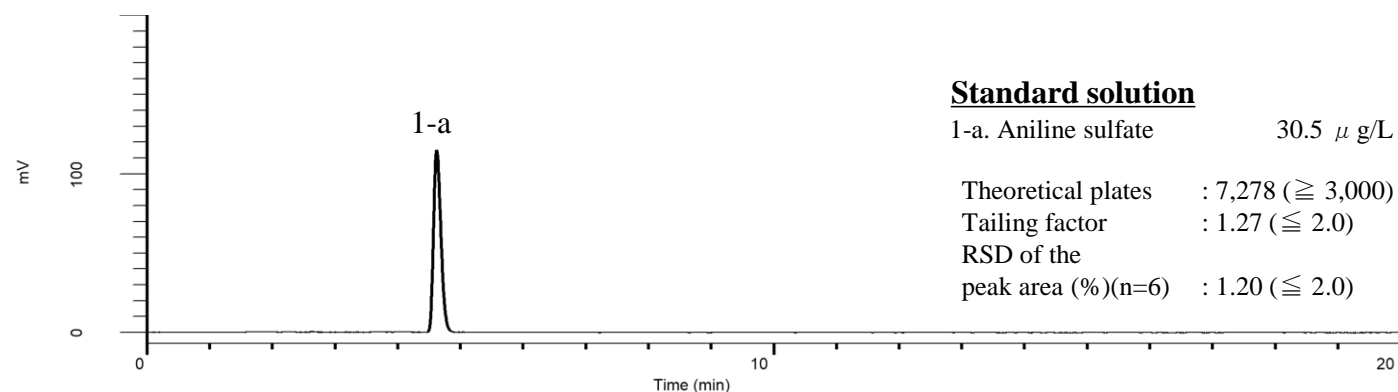


Analysis of Mesalazine

(Under the Condition of the Japanese Pharmacopoeia, (7) Aniline)



Conditions

System : GL7700 HPLC system
Column : InertSustain C18
 (5 μ m, 250 x 4.6 mm I.D.)
Column Cat. No. : 5020-07346
Eluent : A) CH₃CN
 B) Buffer*
 A/B = 50/50, v/v
Flow Rate : 1.05 mL/min
Col. Temp. : 40 °C
Detection : FL Ex 280 nm Em 340 nm (FL7753 FL Detector)
Injection Vol. : 100 μ L
Sample : Standard

Analyte:

1. Aniline sulfate

*Dissolve 9.52 g of sodium acetate trihydrate in a suitable amount of water, add 1.72 mL of acetic acid (100), then add water to make 1000 mL, and adjust to pH 5.0 with acetic acid (100) or dilute sodium hydroxide TS.