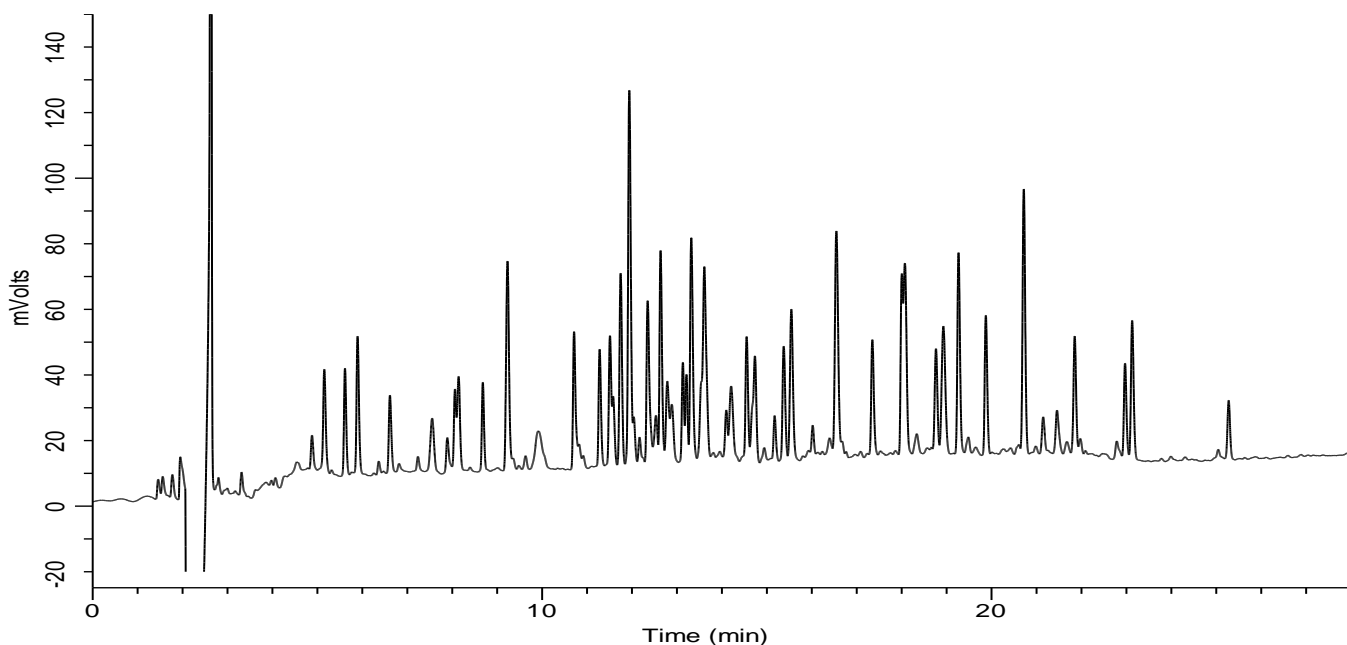


Analysis of BSA Digests



Conditions

System : LC800 HPLC system
Column : InertSustain AQ-C18
 (1.9 μ m, 150 x 2.1 mm I.D.)
Column Cat. No. : 5020-89940
Eluent : A) 0.1% TFA in CH₃CN
 B) 0.1% TFA in H₂O
 A/B = 10/90 - 30 min - 50/50 - 0.1 min - 90/10
 - 5 min - 90/10 - 0.1 min - 10/90 - 15 min
Flow Rate : 0.2 mL/min
Col. Temp. : 40 °C
Detection : UV 210 nm
Injection Vol. : 10 μ L

Analyte:

Tryptic Digest of BSA (0.5 mg/mL)