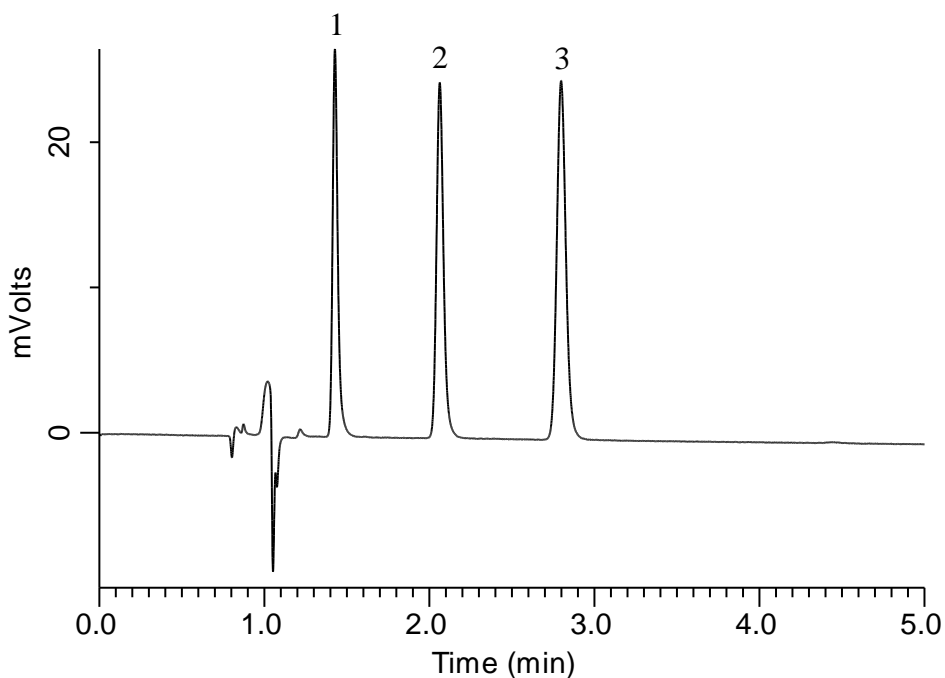


## Analysis of Benzenediols

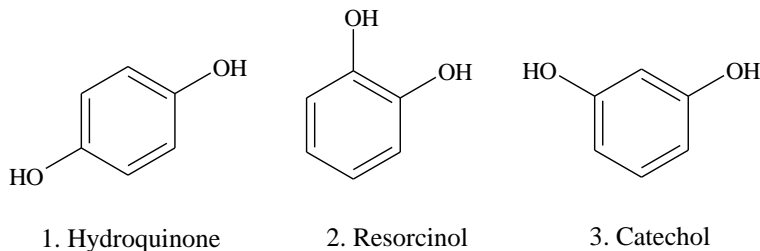


### Conditions

**System** : LC800 HPLC system  
**Column** : InertSustain C18  
 (3  $\mu$  m, 100 x 2.1 mm I.D.)  
**Column Cat. No.** : 5020-07414  
**Eluent** : A) 0.1 % TFA in CH<sub>3</sub>CN  
 B) 0.1 % TFA in H<sub>2</sub>O  
 A/B = 15/85, v/v  
**Flow Rate** : 0.3 mL/min  
**Col. Temp.** : 40 °C  
**Detection** : UV 275 nm  
**Injection Vol.** : 5  $\mu$  L  
**Sample** : Standard

### Analyte:

1. Hydroquinone  
 2. Resorcinol  
 3. Catechol  
 (10  $\mu$  g/mL each)



Structures are created using Chemistry 4-D Draw which is provided by ChemInnovation Software, Inc.