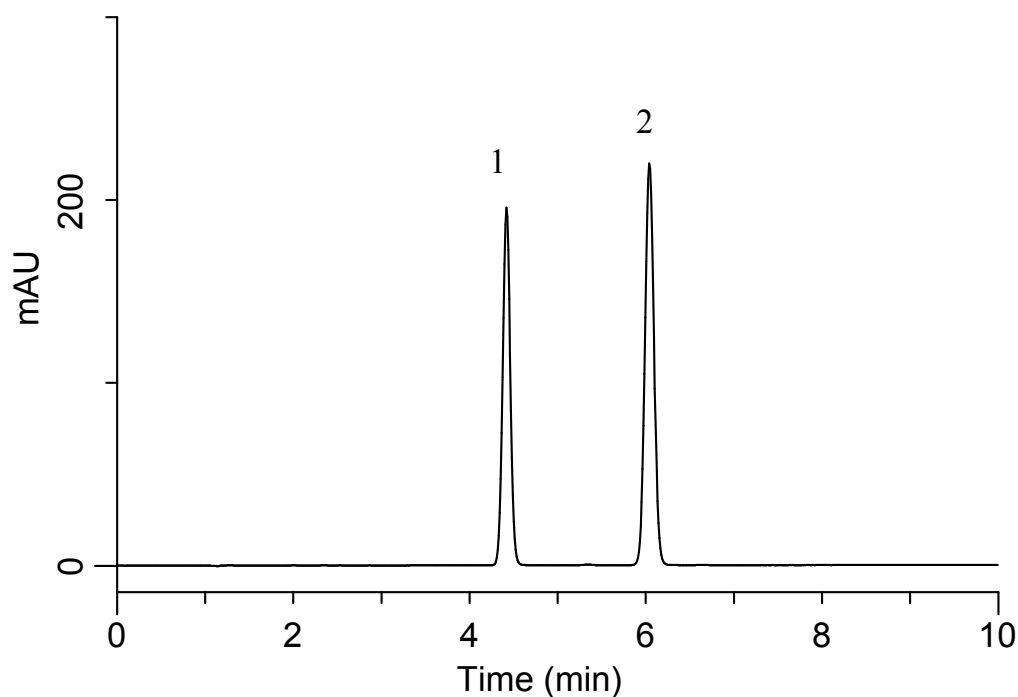


Analysis of Glyburide

(Under the Condition of USP 39-NF34)

Data No. LB458-0919



Conditions

System : GL7700 HPLC system
Column : Inertsil C8
(5 μ m, 250 x 4.6 mm I.D.)
Column Cat. No. : 5020-01228
Eluent : A) CH₃CN
B) 2.6 g/L NH₄H₂PO₄ in H₂O
A/B = 55/45, v/v
Flow Rate : 2.0 mL/min
Col. Temp. : 40 °C
Detection : UV 254 nm (PD7752 PDA Detector)
Injection Vol. : 10 μ L
Sample : Standard

Analyte:

1. Glyburide 0.42 mg/mL
2. Progesterone 0.17 mg/mL

Resolution (1, 2) : 9.30 (\geq 5.0)
RSD of the 1 area (%) (n=5) : 0.14 (\leq 2.0)