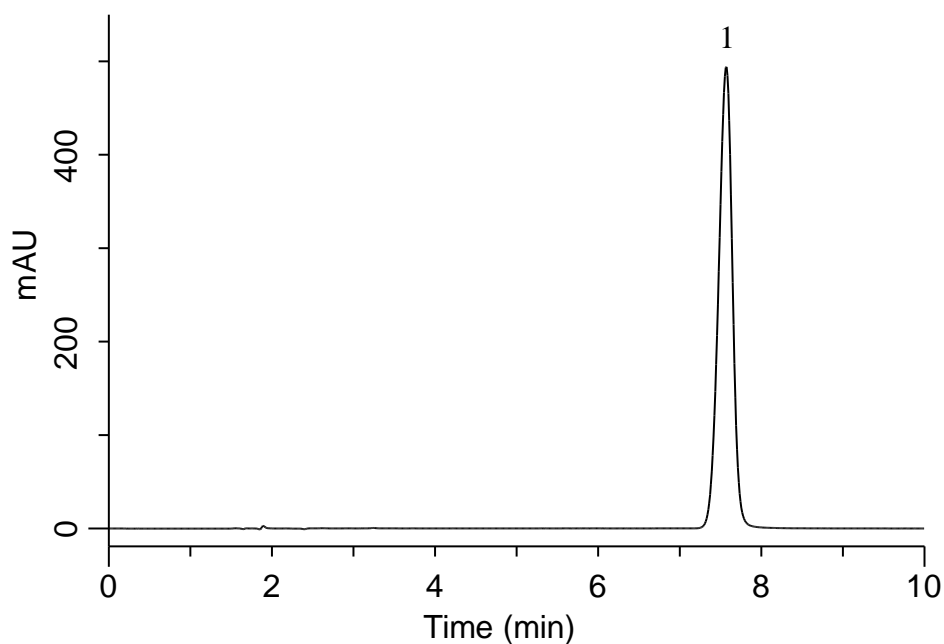


Analysis of Cephalexin

(Under the Condition of USP 39-NF34)



Conditions

System : GL7700 HPLC system
Column : InertSustain C18
 (5 μ m, 250 x 4.6 mmI.D.)
Column Cat. No. : 5020-07346
Eluent : Solution*
Flow Rate : 1.5 mL/min
Col. Temp. : 40 °C
Detection : UV 254 nm (PD7752 PDA Detector)
Injection Vol. : 20 μ L
Sample : Standard

Analyte:

1. Cephalexin 0.4 mg/mL

RSD of the area (%) (n=5) : 0.03 (\leq 2.0)

*0.985 g/L of sodium-1-pentanesulfonate in a mixture of acetonitrile, methanol, triethylamine, and water (20:10:3:170). Adjusted pH 3.0 with phosphoric acid.