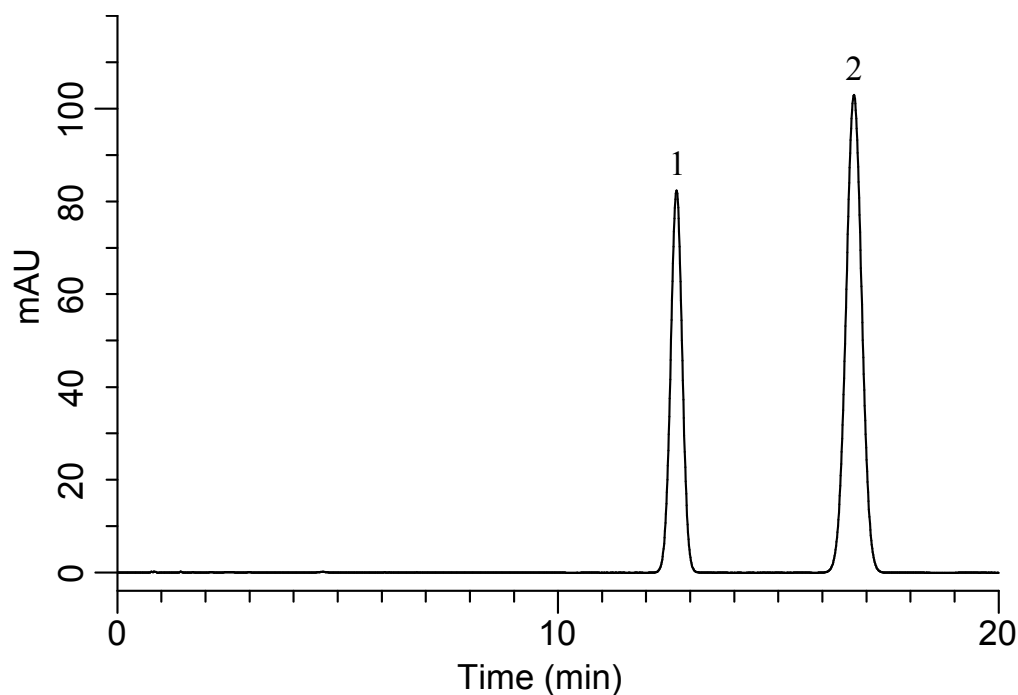


### Analysis of Ibuprofen

(Under the Condition of USP 39-NF34, Ibuprofen Oral Suspension)

Data No. LB463-0894



#### Conditions

**System** : GL7700 HPLC system  
**Column** : InertSustain C8  
(5  $\mu$  m, 150 x 4.6 mmI.D.)  
**Column Cat. No.** : 5020-16027  
**Eluent** : A) CH<sub>3</sub>CN  
B) 0.01 M H<sub>3</sub>PO<sub>4</sub> in H<sub>2</sub>O  
A/B = 37/63, v/v  
**Flow Rate** : 2.0 mL/min  
**Col. Temp.** : 40 °C  
**Detection** : UV 220 nm (PD7752 PDA Detector)  
**Injection Vol.** : 5  $\mu$  L  
**Sample** : Standard

#### Analyte:

1. Benzophenone 0.32 mg/mL  
2. Ibuprofen 0.48 mg/mL

Resolution (1, 2) : 6.84 ( $\geq$  1.5)  
Tailing factor : 1.00 ( $\leq$  2.0)  
RSD of the area (%) (n=5) : 0.05 ( $\leq$  2.0)