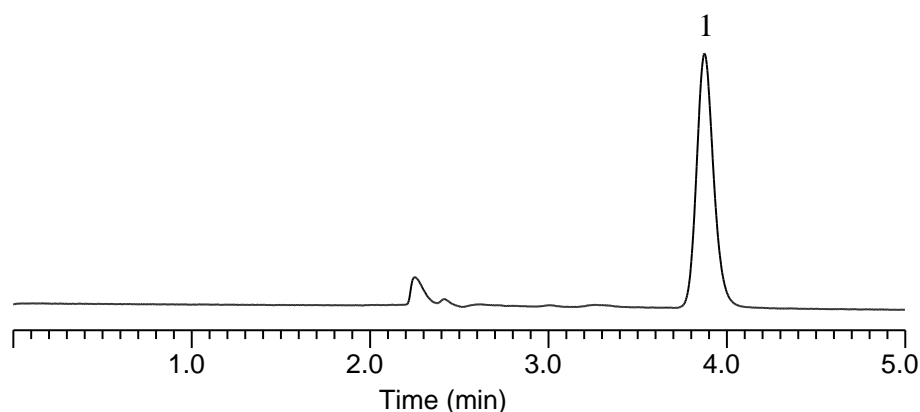


Analysis of Oxalic acid

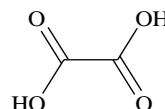


Conditions

Column : InertSustain Amide
 (5 μ m, 250 x 4.6 mm I.D.)
Column Cat. No. : 5020-88632
Eluent : A) CH₃CN
 B) 30 mM Na₂HPO₄ in H₂O (pH 6.8)
 A/B = 65/35, v/v
Flow rate : 1.0 mL/min
Col. Temp. : 40 °C
Detection : UV 220 nm
Injection Vol. : 5 μ L
Sample : Standard

Analyte:

1. Oxalic acid 100 mg/L



Structures are created using Chemistry 4-D Draw which is provided by ChemInnovayion Software, Inc.