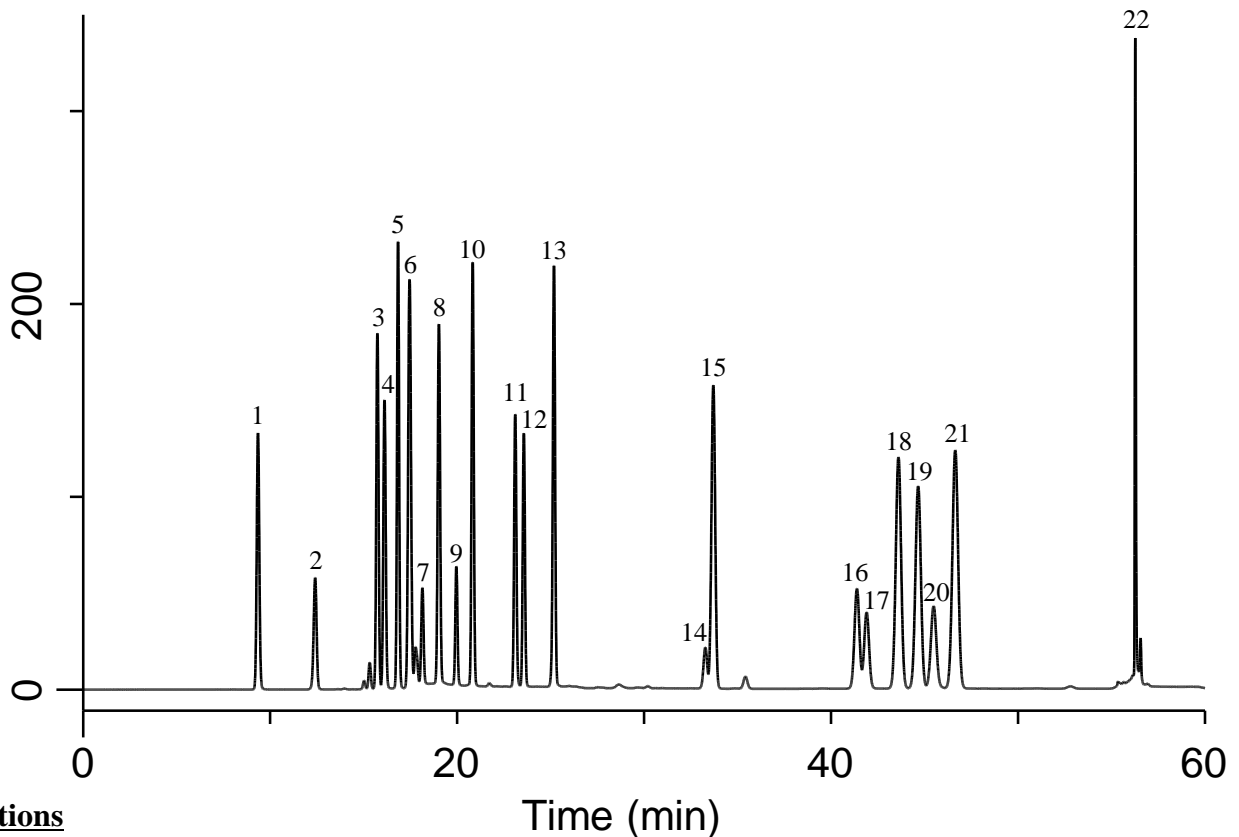


## Simultaneous analysis of Amino acids derivatized with 4-fluoro-7-nitro-2,1,3-benzoxadiazole (NBD-F)



**Conditions**

**System** : GL7700 HPLC system  
**Column** : InertSustainSwift C18  
 (5  $\mu$  m, 250 x 4.6 mm I.D.)  
**Column Cat. No.** : 5020-88027  
**Eluent** : A) 0.1 % TFA in CH<sub>3</sub>CN  
 B) 0.1 % TFA in H<sub>2</sub>O

**Analyte:**

- |                      |                       |
|----------------------|-----------------------|
| 1. NBD-Taurin        | 12. NBD-GABA          |
| 2. NBD-Histidine     | 13. NBD-Proline       |
| 3. NBD-Glutamine     | 14. NBD-Methionine    |
| 4. NBD-Serine        | 15. NBD-Valine        |
| 5. NBD-Arginine      | 16. NBD-Cystine       |
| 6. NBD-OH            | 17. NBD-Ornithine     |
| 7. NBD-Aspartic acid | 18. NBD-Isoleucine    |
| 8. NBD-Glycine       | 19. NBD-Leucine       |
| 9. NBD-Glutamic acid | 20. NBD-Lysine        |
| 10. NBD-Threonine    | 21. NBD-Phenylalanine |
| 11. NBD-Alanine      | 22. NBD-Tyrosine      |
- (NBD-amino acids, 50  $\mu$  mol/L each)

Time (min)	A (%)	B (%)
0.00	10	90
5.00	10	90
20.0	30	70
50.0	35	65
50.1	80	20
55.0	80	20
55.1	10	90
70.0	10	90

**Flow rate** : 1.0 mL/min  
**Col. Temp.** : 40 °C  
**Detection** : FL Ex 470 nm Em 530 nm  
**Injection Vol.** : 5  $\mu$  L  
**Sample** : Standard solution derivatized by NBD-F