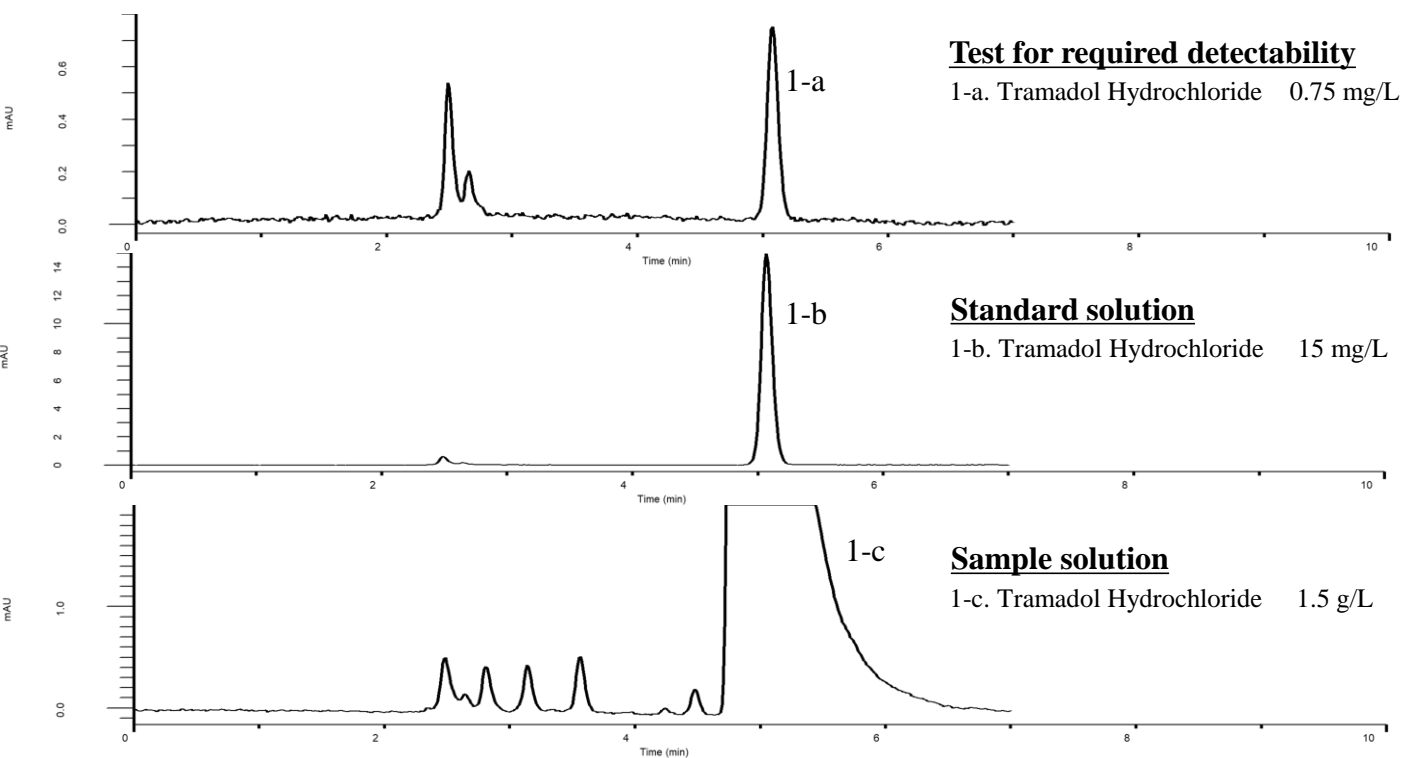


# Analysis of Tramadol Hydrochloride

(Under the Condition of the draft for the Japanese Pharmacopoeia)



## Conditions

**System** : GL7700 HPLC system  
**Column** : InertSustainSwift C8  
 (5  $\mu$  m, 250 x 4.0 mm I.D.)  
**Column Cat. No.** : 5020-88324  
**Eluent** : A) CH<sub>3</sub>CN  
 B) 0.2 % TFA in H<sub>2</sub>O  
 A/B = 59/141, v/v  
**Flow Rate** : 0.9 mL/min  
**Col. Temp.** : 25 °C  
**Detection** : UV 270 nm (PD7752 PDA Detector)  
**Injection Vol.** : 20  $\mu$  L  
**Sample** : Standard

## Analyte:

1. Tramadol Hydrochloride

The peak area ratio of 1-a to 1-b (%) : (3.5  $\leq$ ) 4.91 ( $\leq$  6.5)  
 Theoretical plate number (1-b) : 15,016 ( $\geq$  5,000)  
 RSD of the peak area (%) (n=6) : 0.20 ( $\leq$  2.0)  
 Tailing factor (n=6) : 1.10 ( $\leq$  1.5)