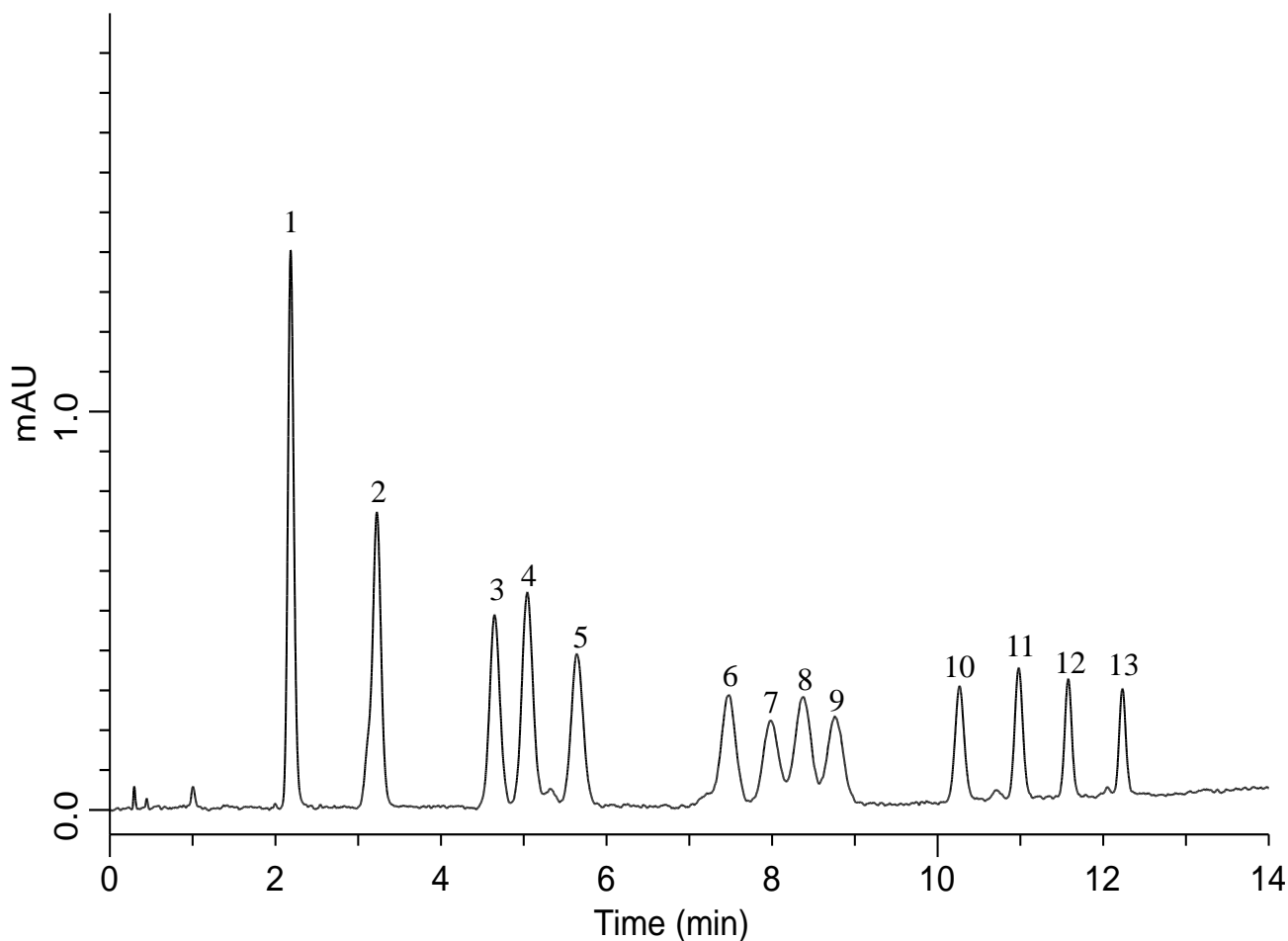


Analysis of 13 kinds of Aldehydes



Conditions

System : GL7700 HPLC system
 (High-pressure gradient system)
Column : InertSustain C18 HP
 (3 μ m, 50 x 3.0 mm I.D.)
Column Cat. No. : 5020-14422
Eluent : A) CH₃CN/THF = 95/5
 B) H₂O/THF = 95/5
 A/B = 35/65 -1 min - 35/65
 - 7 min - 40/60 - 7 min - 80/20, v/v
Flow Rate : 1.0 mL/min
Col. Temp. : 35 °C
Detection : UV 360 nm (UV7750 UV Detector)
Injection Vol. : 5 μ L
Sample : Standard

Analyte:

1. DNPH-Formaldehyde
 2. DNPH-Acetaldehyde
 3. DNPH-Acetone
 4. DNPH-Acrolein
 5. DNPH-Propionaldehyde
 6. DNPH-Crotonaldehyde
 7. DNPH-Methylethylketone
 8. DNPH-Methacrolein
 9. DNPH-*n*-Butyraldehyde
 10. DNPH-Benzaldehyde
 11. DNPH-*n*-Valeraldehyde
 12. DNPH-*m*-Tolualdehyde
 13. DNPH-Hexanal
 (100 μ g/L each)