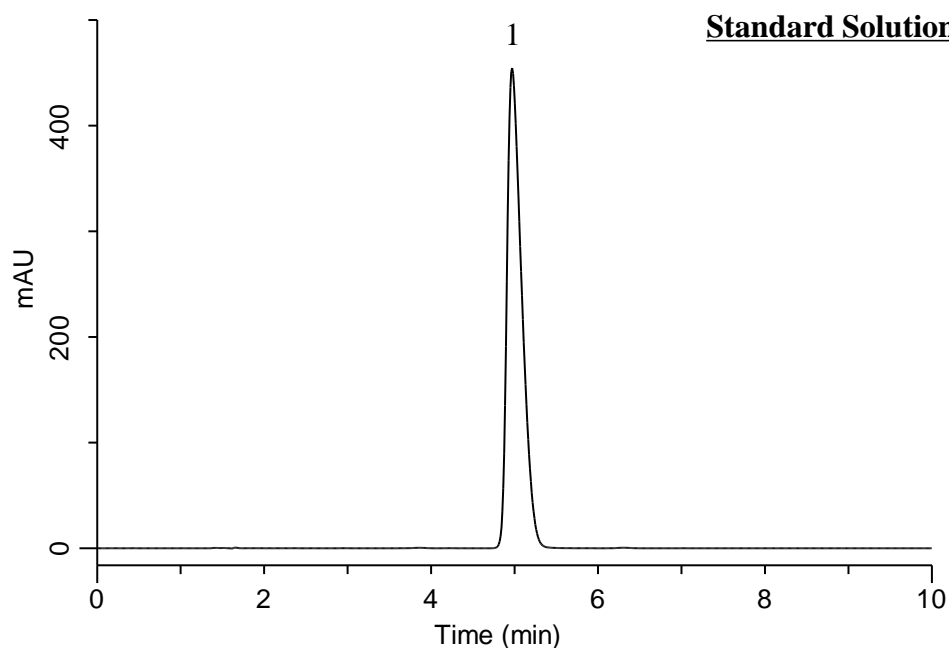


Analysis of Verapamil Hydrochloride

(Under the Condition of the Japanese Pharmacopoeia, Verapamil Hydrochloride Tablets)



Conditions

System : GL7700 HPLC system
Column : InertSustain C18
 (5 μ m, 150 x 4.6 mm I.D.)
Column Cat. No. : 5020-07345
Eluent : A) CH₃OH
 B) H₂O
 C) Perchloric acid
 A/B/C = 550/450/1, v/v/v
Flow Rate : 0.93 mL/min
Col. Temp. : 40 °C
Detection : UV 280 nm (PD7752 PDA Detector)
Injection Vol. : 10 μ L
Sample : Standard

Analyte:

1. Verapamil hydrochloride 800 mg/L

Theoretical plates : 3,740 ($\geq 2,000$)
 Tailing factor : 1.60 (≤ 2.0)
 RSD of the
 peak area (%) (n=6) : 0.09 (≤ 1.0)