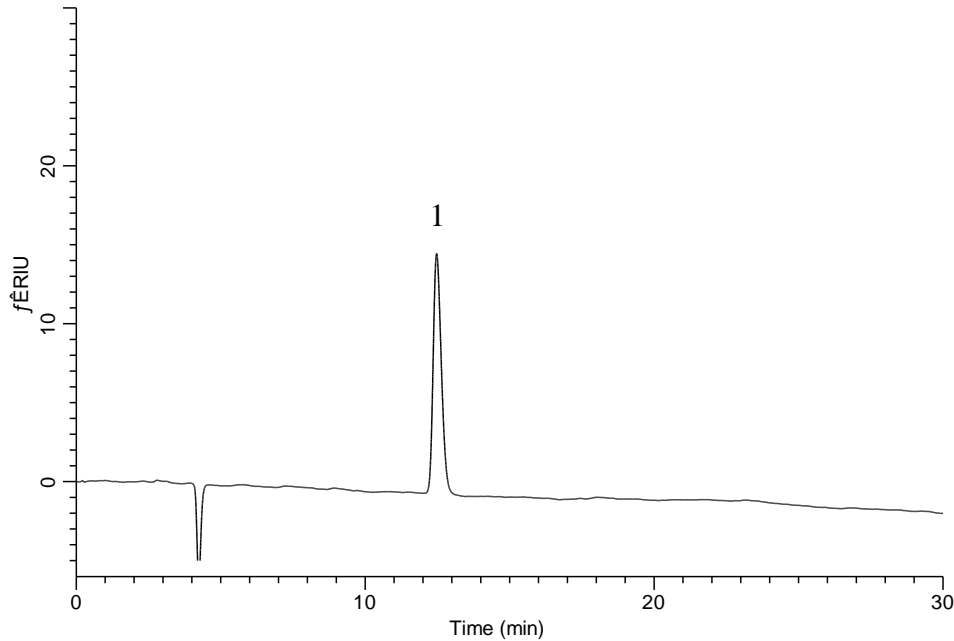


Analysis of Sucralose



Conditions

System : GL7700 HPLC system
Column : InertSustain C18
 (5 μ m, 150 x 4.6 mm I.D.)
Column Cat. No. : 5020-07345
Eluent : A) CH₃CN
 B) H₂O
 A/B = 15/85, v/v
Flow Rate : 0.5 mL/min
Col. Temp. : 40 °C
Detection : RI (RI7754 RI Detector)
Injection Vol. : 20 μ L
Sample : Standard

Analyte:

1. Sucralose 1 mg/mL
 Theoretical plate number : 9,295
 Tailing factor : 1.28