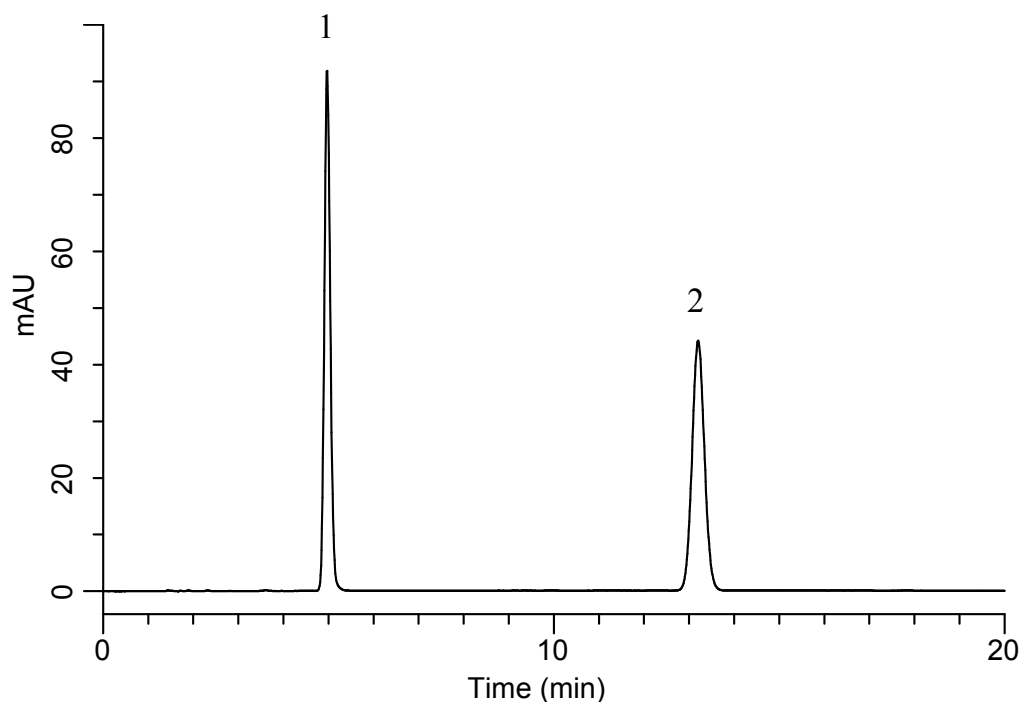


Analysis of Azosemide

(Under the Condition of the draft for the Japanese Pharmacopoeia, Azosemide Tablets)

Data No. LB489-0894



Conditions

System : GL7700 HPLC system
Column : InertSustain C18
(5 μ m, 150 x 4.6 mm I.D.)
Column Cat. No. : 5020-07345
Eluent : A) CH₃OH
B) CH₃CN
C) 30 mM KH₂PO₄ in H₂O
A/B/C = 18/27/55, v/v/v
Flow Rate : 0.88 mL/min
Col. Temp. : 25 °C
Detection : UV 280 nm (PD7752 PDA Detector)
Injection Vol. : 10 μ L
Sample : Standard

Analyte:

1. Azosemide 30 mg/L
2. *p*-Hydroxybenzoic acid *n*-propyl ester 60 mg/L

Resolution (1, 2) : 22.2 (≥ 8)
RSD of the peak
area ratio of
1 to 2 (%) (n=6) : 0.05 (≤ 1.0)