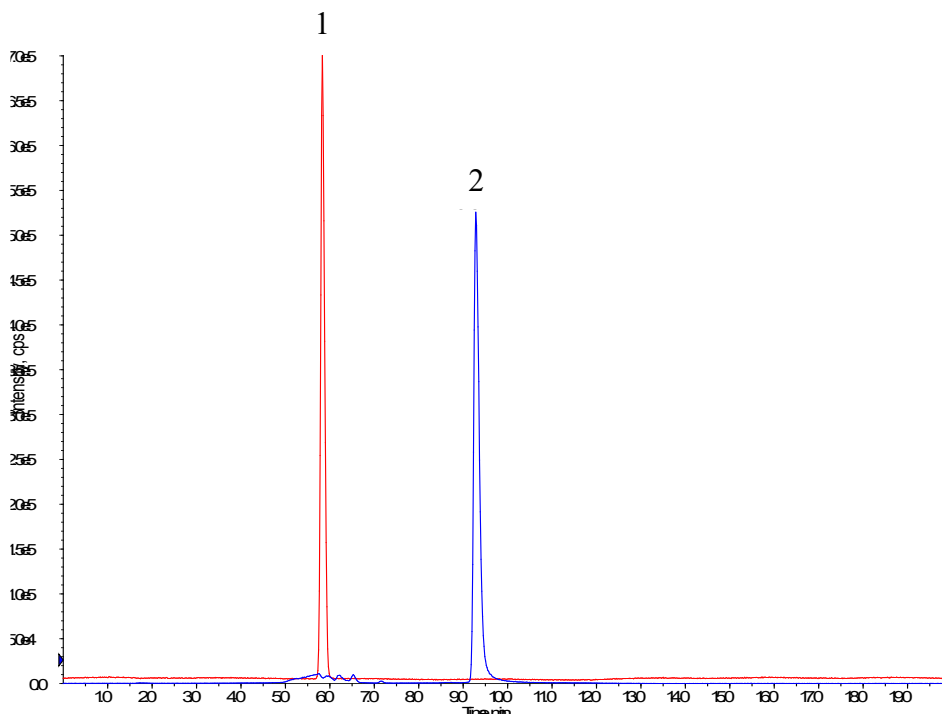


### Analysis of Tyramine and Histamine

Data No. LB495-812



#### Conditions

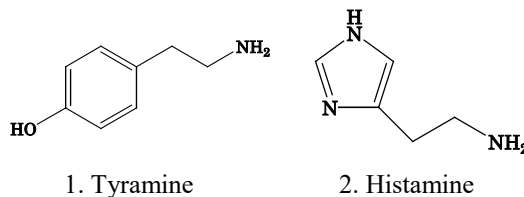
- Column** : InertSustain Amide  
(3 μm, 150 x 2.1 mm I.D.)
- Column Cat. No.** : 5020-88731
- Eluent** : A) 0.1 % HCOOH in CH<sub>3</sub>CN  
B) 0.1 % HCOOH, 20 mM HCOONH<sub>4</sub> in H<sub>2</sub>O

Time (min)	A (%)	B (%)
0.00	95	5
10.0	50	50
10.1	95	5
15.1	95	5

- Flow Rate** : 0.3 mL/min
- Col. Temp.** : 40 °C
- Detection** : LC/MS/MS (4000Q TRAP®, ESI, Positive, SRM)
- Injection Vol.** : 5 μL
- Sample** : Standard

#### Analyte:

1. Tyramine
  2. Histamine
- (100 ng/mL each)



CUR	CAD	IS	TEM	GS1	GS2
10	Medium	5500	600	60	40
	Q1	Q3	DP	CE	CXP
Tyramine	138	77	31	44	8
Histamine	112	95	46	23	12