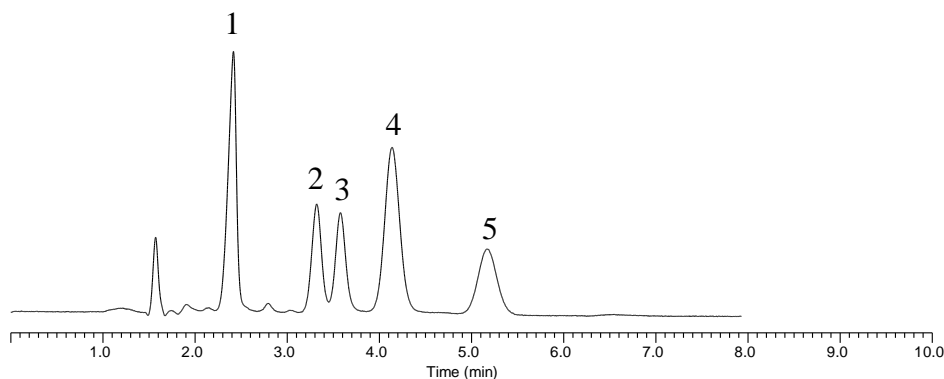


## Analysis of Tasty Components



### Conditions

**Column** : InertSustain Amide  
 (5  $\mu$  m, 150 x 2.1 mm I.D.)  
**Column Cat. No.** : 5020-88607  
**Eluent** : A) CH<sub>3</sub>CN  
 B) 25 mM Phosphate Buffer  
 (K<sub>2</sub>HPO<sub>4</sub> and KH<sub>2</sub>PO<sub>4</sub>)  
 A/B = 75/25, v/v  
**Flow Rate** : 0.2 mL/min  
**Col. Temp.** : 40 °C  
**Detection** : UV 210 nm  
**Injection Vol.** : 1  $\mu$  L  
**Sample** : Standard

### Analyte:

1. Succinic acid	5 mg/mL
2. Glutamic acid	5 mg/mL
3. Aspartic acid	5 mg/mL
4. Inosinic acid (IMP)	0.1 mg/mL
5. Guanylic acid (GMP)	0.1 mg/mL