

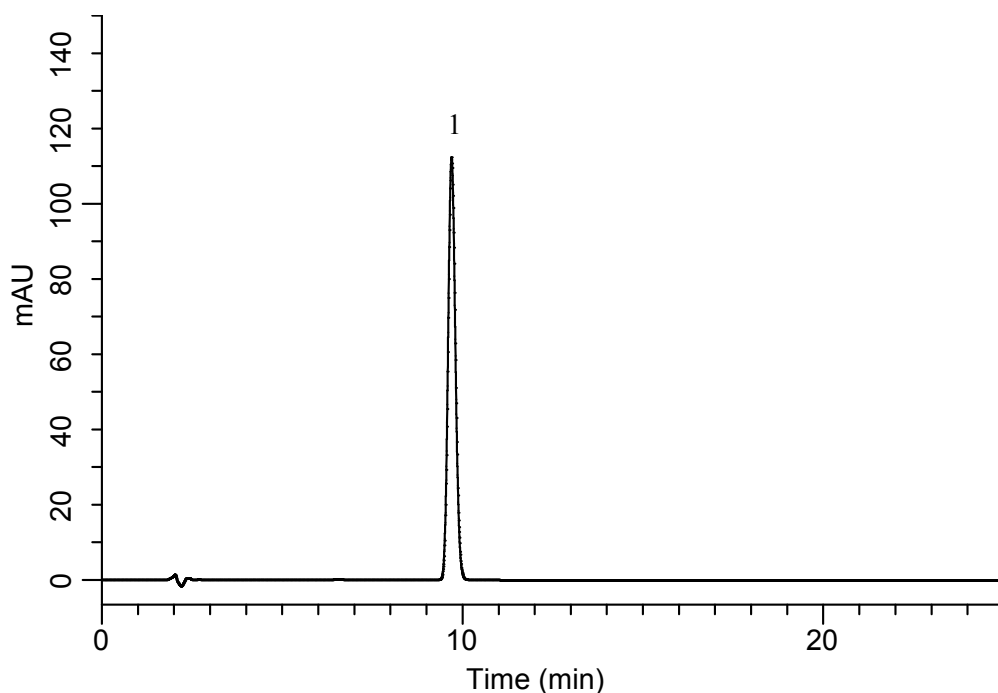
InertSearch™ for LC

Inertsil® Applications

Analysis of Warfarin Potassium

(Under the Condition of the Japanese Pharmacopoeia 17th edition)

Data No. LB502-0843



Conditions

System : GL7700 HPLC system
Column : InertSustain Cyano
(5 μ m, 250 x 4.6 mm I.D.)
Column Cat. No. : 5020-89277
Eluent : A) CH₃CN
B) H₂O
C) CH₃COOH
A/B/C = 32/68/1, v/v/v
Flow Rate : 1.5 mL/min
Col. Temp. : 40 °C
Detection : UV 260 nm (PD7752 PDA Detector)
Injection Vol. : 20 μ L
Sample : Standard

Analyte:

1. Warfarin 500 mg/L

Theoretical plate number : 10,833 (\geq 8,000)
Symmetry factor : 1.10 (\leq 1.5)
RSD of the area (%) (n = 6) : 0.06 (\leq 1.0)