

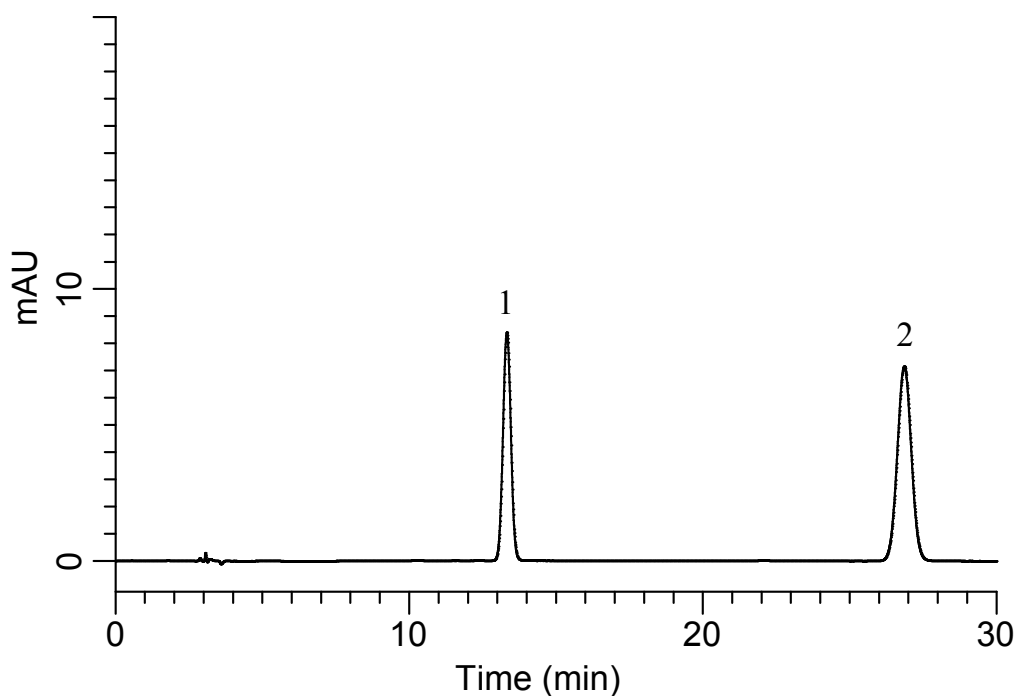
InertSearch™ for LC

Inertsil® Applications

Analysis of Estradiol and Progesterone

(Under the Condition of the draft for the Japanese Standards of Quasi-drug Ingredients, Placental Extract)

Data No. LB510-0919



Conditions

System : GL7700 HPLC system
Column : InertSustainSwift C18
(5 μ m, 150 x 4.6 mm I.D.)
Column Cat. No. : 5020-88026
Eluent : A) CH₃OH
B) H₂O
A/B = 27/23, v/v
Flow Rate : 0.65 mL/min
Col. Temp. : 50 °C
Detection : UV 270 nm (UV7751 UV Detector)
Injection Vol. : 5 μ L
Sample : Standard

Analyte:

1. Estradiol 80 mg/L
2. Progesterone 40 mg/L

Resolution (1, 2) : 19.7 (\geq 10)
RSD of the 1 area (%) (n=6) : 0.16 (\leq 2.0)