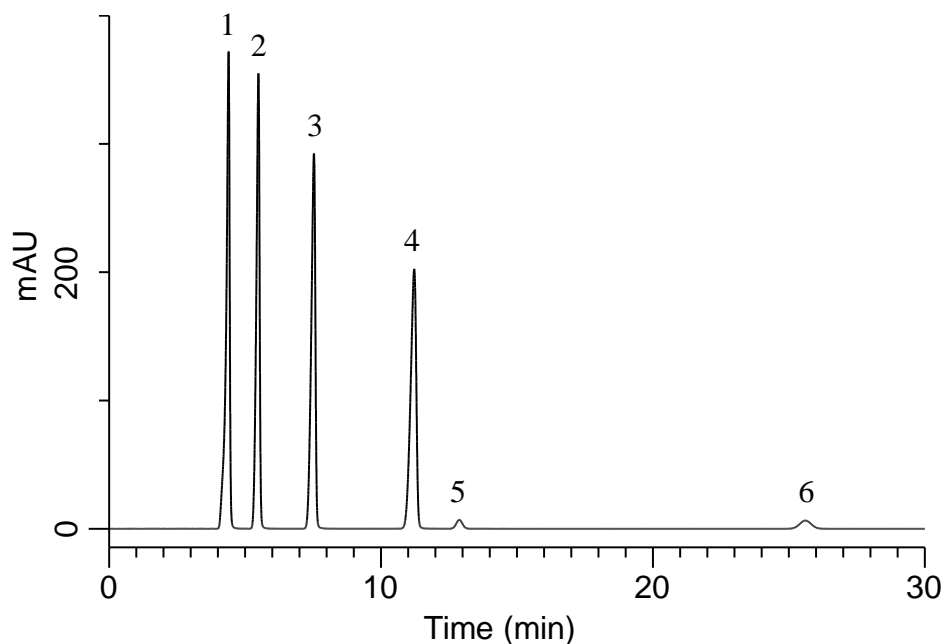


## Analysis of Parabens, Estradiol and Progesterone



### Conditions

**System** : GL7700 HPLC system  
**Column** : InertSustainSwift C18  
 (5  $\mu$  m, 150 x 4.6 mm I.D.)  
**Column Cat. No.** : 5020-88026  
**Eluent** : A) CH<sub>3</sub>OH  
 B) H<sub>2</sub>O  
 A/B = 27/23, v/v  
**Flow Rate** : 0.65 mL/min  
**Col. Temp.** : 50 °C  
**Detection** : UV 270 nm (UV7751 UV Detector)  
**Injection Vol.** : 5  $\mu$  L  
**Sample** : Standard

### Analyte:

1. <i>p</i> -Hydroxybenzoic acid methyl ester	100 mg/L
2. <i>p</i> -Hydroxybenzoic acid ethyl ester	100 mg/L
3. <i>p</i> -Hydroxybenzoic acid <i>n</i> -propyl ester	100 mg/L
4. <i>p</i> -Hydroxybenzoic acid <i>n</i> -butyl ester	100 mg/L
5. Estradiol	80 mg/L
6. Progesterone	40 mg/L