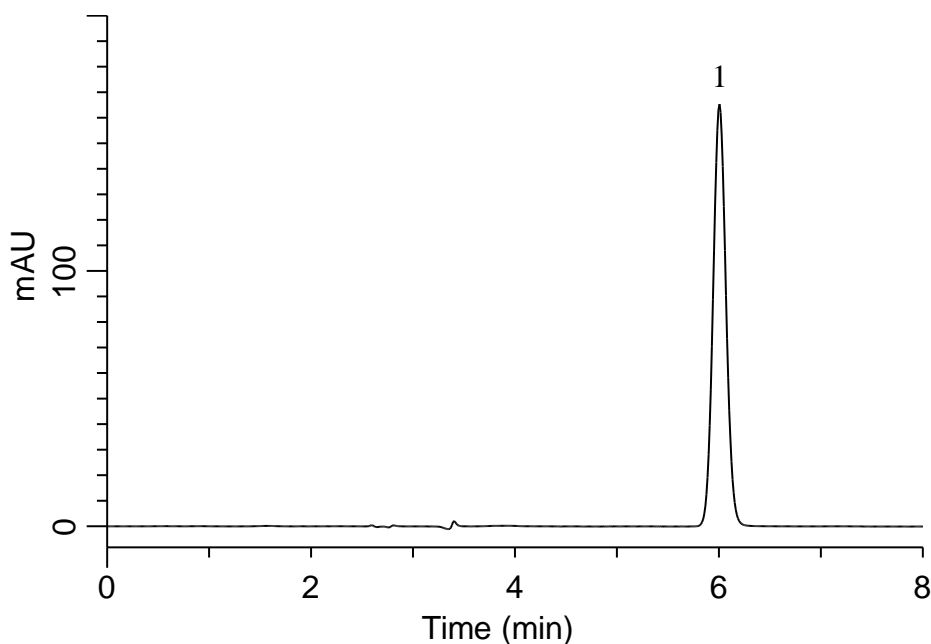


## Analysis of Chlorogenic acid

(Under the Condition of the Japanese Standards of Quasi-drug Ingredients,  
Coffee Extract)



### Conditions

**System** : GL7700 HPLC system  
**Column** : InertSustain C18  
(5  $\mu$  m, 250 x 4.6 mm I.D.)  
**Column Cat. No.** : 5020-07346  
**Eluent** : A) CH<sub>3</sub>CN  
B) H<sub>2</sub>O  
C) HCOOH  
A/B/C = 30/170/1, v/v/v  
**Flow Rate** : 1.05 mL/min  
**Col. Temp.** : 30 °C  
**Detection** : UV 330 nm (PD7752 PDA Detector)  
**Injection Vol.** : 10  $\mu$  L  
**Sample** : Standard

### Analyte:

1. Chlorogenic acid 40 mg/L