

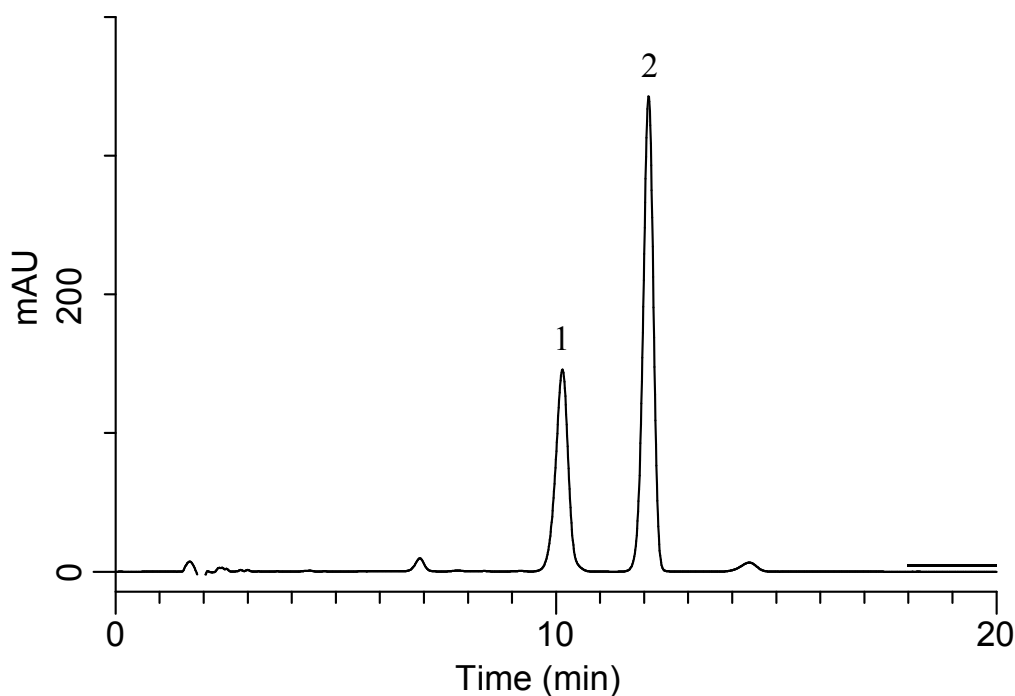
InertSearch™ for LC

Inertsil® Applications

Analysis of Glycyrrhizic acid

(Under the Condition of the Japanese Standards of Quasi-drug Ingredients,
Glycyrrhiza Extracted Powder)

Data No. LB517-0919



Conditions

System : GL7700 HPLC system
Column : InertSustain C18
(5 μ m, 300 x 4.0 mm I.D.)
Column Cat. No. : 5020-87032
Eluent : A) CH₃CN
B) 2 % CH₃COOH in H₂O
A/B = 11/20, v/v
Flow Rate : 1.3 mL/min
Col. Temp. : 40 °C
Detection : UV 254 nm (PD7752 PDA Detector)
Injection Vol. : 20 μ L
Sample : Standard

Analyte:

1. Glycyrrhizic acid 300 mg/L
2. *p*-Hydroxybenzoic acid *n*-propyl ester 50 mg/L

Resolution (1, 2) : 4.13 (\geq 1.5)