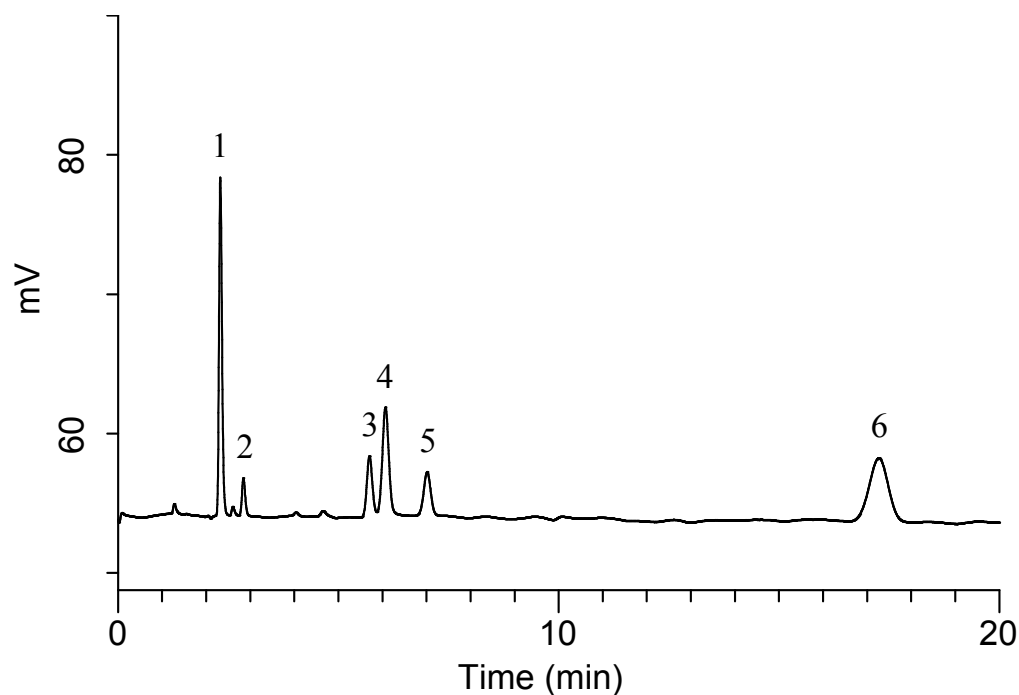


InertSearch™ for LC

Inertsil® Applications

Analysis of Glutathione and its related compounds

Data No. LB522-0919



Conditions

System	: GL7700 HPLC system
Column	: InertSustain AQ-C18 (5 μ m, 150 x 4.6 mm I.D.)
Column Cat. No.	: 5020-89730
Eluent	: A) CH ₃ CN B) 50 mM NaH ₂ PO ₄ + 5 mM IPCC-06 in H ₂ O (IPCC-06: Sodium 1 - Hexanesulfonate) (pH 2.2, H ₃ PO ₄) A/B = 25/975, w/w
Flow Rate	: 1.0 mL/min
Col. Temp.	: 40 °C
Detection	: ECD 1600 mV vs Ag/AgCl (ED723 EC Detector, Diamond, 30 °C)
Injection Vol.	: 10 μ L
Sample	: Standard

Analyte:

1. Cystine
2. Cysteine
3. Cysteinylglycine (Cys-Gly)
4. Glutathione, Reduced Form (GSH)
5. γ -Glutamylcysteine (γ -Glu-Cys)
6. Glutathione, Oxidized Form (GSSG)
(1 μ M each)